

YAMAHA MARINE

HOT SHEET



EFFECTIVE NOVEMBER 1, 2009

F6 / F4 Portables *four stroke*

You want power. You want performance. You want portability. You want Yamaha.

Introducing the all-new Yamaha F6 / F4 portable outboards.

Weighing in as light as 60 pounds, these new Yamaha portables mean you can have all the benefits you want and need in a portable outboard. Truly compact, light weight, and easy-to-handle, these pint-sized protégés of our larger outboards are feature-packed and offer the outstanding reliability you've come to demand from Yamaha.

Available in both 15" and 20" models, they're among the most fuel-efficient in their class, and all models proudly feature a CARB 3-star rating for ultra-low emissions.

The new Yamaha F6 and F4 portables. Proof positive that a little goes a long way.



- **Powerful Performance** – OHV design with an advanced ignition system.
- **True Portability** – light weight with built in carrying handles.
- **Fuel Efficiency** – carbureted single-cylinder, with a standard built-in fuel tank and optional external fuel tank compatibility for extended range.
- **Ultra-low Emissions** – featuring a CARB 3-star rating.
- **Operator Convenience** – advanced tiller handle features, Shallow Water Drive, and aluminum propeller; standard.
- **Smooth and Quiet** – optimally-balanced Yamaha four stroke design.
- **Easy Maintenance and Storage** – featuring Yamaha's new Easy Storage Oil Retention System.
- **Lasting Value** – Yamaha reliability with advanced features help protect your investment for years of trouble-free enjoyment.
- **Peace of Mind** – three-year pleasure or government limited warranty.

AVAILABLE MODELS: F6SMHA • F6LMHA • F4SMHA • F4LMHA



F6 / F4 Portables Four Stroke

FEATURES



Power/Performance

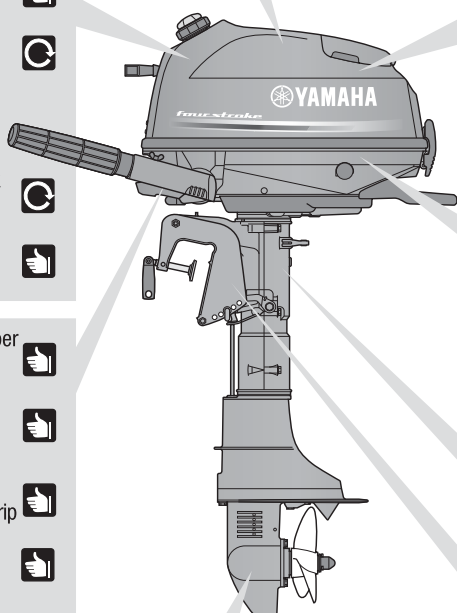
- 1.1L Built-In See-Through Fuel Tank
- Built-In Auxiliary Priming Pump
- Fuel Tank Switching Valve
- Water Resistant Fuel Tank Cap
- Built-in Fuel Filter
- External Fuel Tank Connector Cover
- Tilted Fuel Filler

- Tiller Handle Damper with Dynamic Balancer
- Easy Grip Starter Knob
- Ergonomically-Designed Throttle Grip
- Built-In Rear Carrying Handle
- Ergonomically Designed Front Handle
- Large Shift Lever
- Large Toggle Clamp



Reliability/Durability

- CDI Ignition with Built-In Coil
- 12V-6Amp Alternator with Rectifier (Optional)



- Splined Prop and Prop Shaft
- New Propeller Sizes (Optional)



Convenience/Control

- Optimally Balanced Crankshaft
- Bottom Cowling Damper
- Easy Start Decompression Device
- Blow-By Gas Reburning System
- Precise Carburetor Setting

- Pressurized Oil System
- Lubrication Check Window
- Easy Storage Oil Retention System

- Labyrinth Exhaust

- 90° Each Direction Steering
- 3-Step Shallow Water Drive
- Long-Span Mounting System
- 5 Step Trim Adjustment

Warning & Protection System

- Over-Rev Limiter

Ultimate Corrosion Protection System

- Special Aluminum Alloy: YDC30
- Self-Sacrificing Anodes
- Start-In-Gear Protection

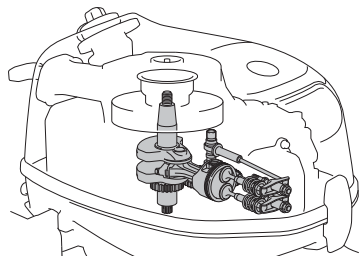
MODEL CODE CHART (EXAMPLE)

| F | 6 | S | M | H | A |
|-----------------|------------|--|--|--|--|
| Fuel Induction | Horsepower | Shaft Length | Starting Method PTT | Control Method | Generation |
| F = Four Stroke | | S = 15" L = 20" X = 25" U = 30" J = Jet | Blank = PTT & E start P = PT & E start E = Electric Start M = Manual Start | Blank = Remote Control H = Tiller Handle C = Command Link Control | A = 1st change on motor B = 2nd change on motor C = 3rd change on motor Etc. |

F6 / F4 Portables Four Stroke

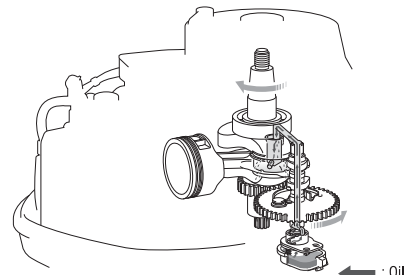
PERFORMANCE, RELIABILITY, CONVENIENCE

LIGHTWEIGHT, PORTABLE POWER



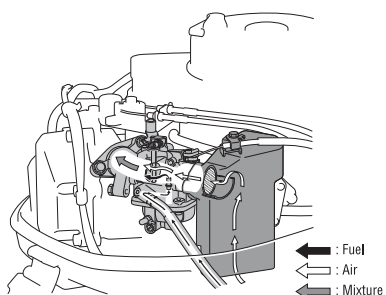
Weighing in as light as 60 pounds, these 139cc OHV single cylinder four stroke powerhouses offer a CDI ignition system, optimally-balanced crankshaft, long span mounting system, labyrinth exhaust and a host of other features for smooth, quiet power. They even have built-in carrying handles for true portability and convenience.

RELIABLE LUBRICATION AND STORAGE



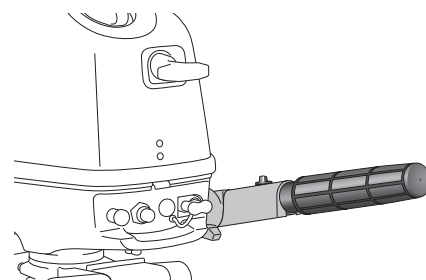
Yamaha's new F4 and F6 both feature a pressurized oiling system. They can be stored on either side or on the front grip without fear of oil leakage, due to Yamaha's exclusive Easy Storage Oil Retention System.

MAXIMUM EFFICIENCY



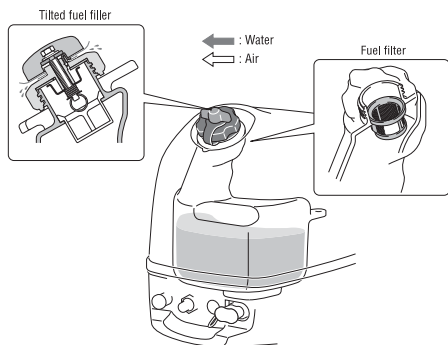
The carburetor and its setting is factory-selected for maximum fuel efficiency, helping these outboards achieve a 3-star C.A.R.B. emissions rating. Additionally, automatic decompression, built-in auxiliary priming, and start-in-gear prevention help make for easy, safer starts.

COMFORTABLE, CONVENIENT CONTROL



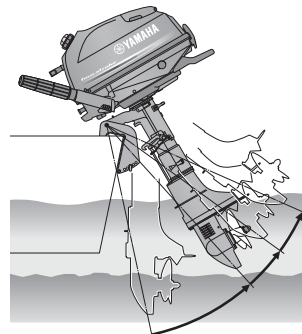
With a dynamically-balanced and dampened large twist-grip throttle, 180-degree steering, and large F-N-R shift handle; comfortable, convenient control is key.

EASY OPERATION



A 1.1L see-through fuel tank is built in, with switchable access to an optional external tank for extended range. A tilted, water-resistant fuel filler cap and built-in fuel strainer add to both the convenient operation and reliability of these outboards.

VERSATILE PERFORMANCE



A 5-step trim adjustment couples with a 3-step Shallow Water Drive System to help make these outboards perform in various conditions. A splined propeller shaft and an expanded selection of available propeller sizes give you performance that's versatile and easy to handle and operate.

F6 / F4 Portables Four Stroke

SPECIFICATIONS

ENGINE

| | |
|-----------------------------------|--|
| Type | One-Cylinder |
| Displacement | 139cc (8.5 ci) |
| Bore x Stroke | 62 x 46mm (2.44 x 1.81 in) |
| Full Throttle RPM Range | 4000 ~ 5000 (F4) 4500 ~ 5500 (F6) |
| Horsepower Rating at Propshaft | 4hp at 4500 rpm (F4) 6hp at 5000 rpm (F6) |
| Compression Ratio | 8.9:1 |
| Fuel Induction/Scavenging | OHV |
| Alternator Output | 6 Amp (Optional: Requires Charging Kit) |
| Starting Method See Model Code | M = Manual |
| Ignition | CDI |
| Lubrication | Wet Sump |
| Degree of Trim | 5 positions |
| Degree of Tilt | 69° |
| Exhaust | Above Propeller |
| Cooling | Water/Thermostatic Control |

DRIVE

| | |
|------------|---------------------------|
| Gear Shift | Forward, Neutral, Reverse |
| Gear Ratio | 13:27 (2.08) |

SHAFT LENGTH

| | |
|----------------|-----------------|
| See Model Code | S = 15" L = 20" |
|----------------|-----------------|

FUEL AND LUBRICATION

| | |
|-------------------------------|--|
| Recommended Fuel | Regular Unleaded (Minimum Pump Octane 87) |
| Fuel Tank Capacity (Integral) | 1.1L (.29 gal) |
| Ethanol Blend Limit | 10% Maximum |
| Recommended Oil | Yamalube® 4M (See owner's manual) |
| Engine Oil Capacity | .6L (.63 qt) |

WEIGHT

| | |
|--------|---------------|
| F6SMHA | 27kg (60 lbs) |
| F6LMHA | 28kg (62 lbs) |
| F4SMHA | 27kg (60 lbs) |
| F4LMHA | 28kg (62 lbs) |

LIMITED WARRANTY

| | |
|------------|-------------|
| Pleasure | Three Years |
| Government | Three Years |
| Commercial | One Year |

FEATURES

POWER/PERFORMANCE

- Four Stroke Engine Design
- OHV
- 2-valves Per Cylinder
- Precise Carburetor Setting
- Built-in Auxiliary Priming Pump
- Streamlined Intake Manifold
- Long Span Mount System
- Oil Separator
- Streamlined Gearcase
- Dynamically Balanced Crankshaft
- Labyrinth Exhaust
- California C.A.R.B. Ultra Low Emissions 3 Star Rating
- Meets all current Federal EPA Emission Standards

RELIABILITY/DURABILITY

- CDI Ignition System
- Pressurized Lubrication
- Thermostatic Temperature Control
- Sacrificial Anodes
- ACP 221 Paint Process
- SST Drive, Prop, Shift Shafts
- Splined Propeller/Shaft
- Built-in Fuel Filter

CONVENIENCE/CONTROL

- 180-Degree Steering w/F-N-R Shifting
- Shallow Water Drive
- Easy Storage Oil Retention System
- Standard Tiller Handle
- Easy Start Decompression Device
- Lubrication Check Window
- Multiple Gripping Points
- Dual Transom Clamps
- Dynamically Balanced Tiller Handle
- Lower Cowling Damper
- Built-In See-Through Fuel Tank
- Tilted Fuel Filler Opening
- Selectable External Fuel Tank (Optional)
- Forward/Neutral/Reverse Shifting

Primary ID Prefix: (F6) 6BX (F4) 6BV

This document contains many of Yamaha's valuable trademarks. It may also contain trademarks belonging to other companies. Any references to other companies or their products are for identification purposes only, and are not intended to be an endorsement.

Due to Yamaha's ongoing commitment to product improvement, we reserve the right to change without notice, equipment, materials, or specifications.

▲ Consult appropriate Yamaha rigging information and Yamaha Rigging Sheet (YMBS) for complete rigging compatibility and requirements information for particular configurations. All rigging items sold separately.

© 2009 Yamaha Motor Corporation, U.S.A. All rights reserved.

