



PARTS CATALOG

2009-2010



MagicTilt Trailers

2161 LIONS CLUB ROAD, CLEARWATER, FL 33764
(727) 535-5561 (800) 998-TILT (8458) FAX (727) 539-8472

NOTES

DACROTIZED®

The target item is first dipped or sprayed with DACRODIP® solution, a water-based dispersant, before DACROTIZED® treatment is applied through a baking process. The treatment resulting from this process gives the treated part improved corrosion resistance.

STAINLESS STEEL: There are many different grades of stainless steel. The stainless steel used in braking systems requires a fair bit of hardness and thus uses less nickel than other grades of stainless steel. Due to this low quantity of nickel, the stainless steel used in brakes is susceptible to rust. However, the corrosion resistance is still much greater than mild steel.

RM PARTS: Marine Craft parts are available with or without packaging (attractively mounted on heavy card stock). Please specify if you would prefer your parts packaged or loose.

PARTS AVAILABILITY: This is a listing of our most popular parts. We do however sell thousands of other parts. If you don't see what you need, please call our parts department.

TERMS & CONDITIONS

SHIPPING: All orders are shipped via UPS the next business day (in most cases) unless other arrangements are made at the time your order is placed. Manufactured parts require a three day lead time. If you are unsure if the part you are ordering is a "make-part", please ask. There is a handling charge (handling fee will be 10% up to a maximum of \$8.00, with a minimum charge of \$2.00) placed on all orders shipped via UPS. This handling charge is subject to change. Shipping insurance will be added for damage prone parts.

Magic Tilt also may make shipments with its own trucks within established territories according to our schedule. This will be determined on a case by case basis and will be allowed at Magic Tilt's sole discretion.

AXLES: All axles for trailers manufactured prior to 2007 will require an axle worksheet. All axles ordered without a VIN will require an axle worksheet. For axles built in 2007 or later, an axle worksheet is not required, but is preferred.

PRICES: All prices shown in our catalog are suggested list prices and are subject to change. Discounts are determined on a dealer to dealer basis and are also subject to change. Prices in effect at the date of shipment will prevail. If you have any questions, please contact our parts department.

WARRANTY: Warranties are provided by our suppliers only and Magic Tilt does not offer any additional warranties beyond such. However, with prior authorization, parts that are defective may be returned to Magic Tilt for warranty consideration. Invoice number and reason for return must be included.

RETURNS: Magic Tilt will not accept any returned merchandise without prior approval. Parts returned must be in good and resalable condition before a credit is issued. Any return received after 30 days will be subject to a 15% restocking fee. Magic Tilt must be notified of any shortages or incorrect shipments within ten days of receiving your shipment. Special orders are not returnable.

PICK-UP: Magic Tilt does allow our customers to pick-up parts at our Clearwater facility, however we require that orders be placed a **minimum** of twenty-four (24) hours in advance of pick-up.

PA – TIRES & WHEELS

ALL MAG WHEELS INCLUDE CENTER CAPS
LUG NUTS SOLD SEPARATELY

ALUMINUM MAG WHEELS WITH RADIAL TIRES

PART No.	TIRE SIZE	LOAD RANGE	BOLT PATTERN	MAX LOAD
PA4048	ST175/80R 13	C	5Lx4.5"	1360 lbs.
PA4050	ST205/75R 14	C	5Lx4.5"	1760 lbs.
PA4052	ST215/75R 14	C	5Lx4.5"	1870 lbs.
PA4054	ST225/75R 15	D	5Lx4.5"	2540 lbs.
PA4058	LT245/75R 16	E	8Lx6.5"	3085 lbs.
PA4060	LT235/85R 16	G	8Lx6.5"	3750 lbs.



PA4052

GALVANIZED 4 LUG WHEELS WITH BIAS PLY TIRES

PART No.	TIRE SIZE	LOAD RANGE	BOLT PATTERN	MAX LOAD
PA1150	480X8	B	4Lx4"	590 lbs.
PA1360	16.5 X 6.5 X 8	C	4Lx4"	1590 lbs.
PA1660	800X10 DEEP-DISH (205/65D-10)	E	4Lx4"	1650 lbs.
PA1850	480X12	C	4Lx4"	990 lbs.



PA1660

GALVANIZED 5 LUG WHEELS WITH BIAS PLY TIRES

PART No.	TIRE SIZE	LOAD RANGE	BOLT PATTERN	MAX LOAD
PA1950	530X12	C	5Lx4.5"	2090 lbs.
PA2250	B78X13 (175/80D-13)	C	5Lx4.5"	1360 lbs.
PA2450	F78X14 (205/75D-14)	C	5Lx4.5"	1760 lbs.
PA2550	G78X14 (215/75D-14)	C	5Lx4.5"	1870 lbs.
PA2650	F78X15 (205/75D-15)	C	5Lx4.5"	3420 lbs.



PA2550

GALVANIZED 6 LUG WHEELS WITH BIAS PLY TIRES

PART No.	TIRE SIZE	LOAD RANGE	BOLT PATTERN	MAX LOAD
PA2970	H78X15 (225/75D-15)	D	6Lx5.5"	2035 lbs.



PA2970

GALVANIZED 5 LUG WHEELS WITH RADIAL TIRES

PART No.	TIRE SIZE	LOAD RANGE	BOLT PATTERN	MAX LOAD
PA2153	ST175/80R 13	C	5Lx4.5"	1360 lbs.
PA2459	ST205/75R 14	C	5Lx4.5"	1760 lbs.
PA2463	ST215/75R 14	C	5Lx4.5"	1870 lbs.



PA2153

GALVANIZED 6 LUG WHEELS WITH RADIAL TIRES

PART No.	TIRE SIZE	LOAD RANGE	BOLT PATTERN	MAX LOAD
PA2903	ST225/75R 15	D	6Lx5.5"	2540 lbs.



PA2903

GALVANIZED 8 LUG WHEELS WITH RADIAL TIRES

PART No.	TIRE SIZE	LOAD RANGE	BOLT PATTERN	MAX LOAD
PA2905	LT245/75R 16	E	8Lx6.5"	3085 lbs.
PA2908	LT235/85R/16	G	8Lx6.5"	3750 lbs.



PA2908

CENTER CAPS FOR MAG WHEELS

PART No.	FINISH
PC0002	STAINLESS STEEL (POLISHED)

*Please specify wheel size



PC0002

PD – HUBS & ACCESSORIES

DACROTIZED HUB ASSEMBLIES

PART No.	SIZE	BOLT PATTERN
PD1300	1-1/16	4Lx4"
PD1600	1-1/16	5Lx4.5"
PD1700	1-3/8X1-1/16	5Lx4.5"
PD2500	1-1/4X1-3/4	6Lx5.5"
PD2600	1-1/4X1-3/4	8Lx6.5"



PD1300

**HUB ASSEMBLIES INCLUDE: RACES, SEAL, BEARINGS, DUST CAP, LUG NUTS AND COTTER PIN.

CAST HUB & DRUM ASSEMBLIES

PART No.	DIAMETER	SIZE	BOLT PATTERN
PD1900	8-1/2"	1-3/8X1-1/16	5Lx4.5"
PD2000	10"	1-3/8X1-1/16	5Lx4.5"
PD2260	12"	1-1/4X1-3/4	6Lx5.5"



**HUB & DRUM ASSEMBLIES INCLUDE: RACES, SEAL, BEARINGS, DUST CAP, LUG NUTS AND COTTER PIN.

PD2000

DACROTIZED HUBS (WITH RACE)

PART No.	SIZE	BOLT PATTERN
PD1385	1-1/16	4Lx4"
PD1665	1-1/16	5Lx4.5"
PD1755	1-3/8X1-1/16	5Lx4.5"
PD1856	1-1/4X1-3/4	6Lx5.5"



PD1665

CAST HUB & DRUMS (WITH RACE)

PART No.	DIAMETER	SIZE	BOLT PATTERN
PD1852	12"	1-1/4X1-3/4	6Lx5.5"
PD2050	10"	1-3/8X1-1/16	5Lx4.5"
PD2155	12"	1-1/4X1-3/4	8Lx6.5"



PD2155

LUG NUTS

PART No.	DESCRIPTION	FINISH	THREAD
PD2250	LUG NUT	ZINC	13/16"
PD2252	LUG NUT	CHROME	13/16"
PD2254	LUG NUT (LONG)	CHROME	13/16"
PD2255	LUG NUT (LONG)	S/S	13/16"



PD2250

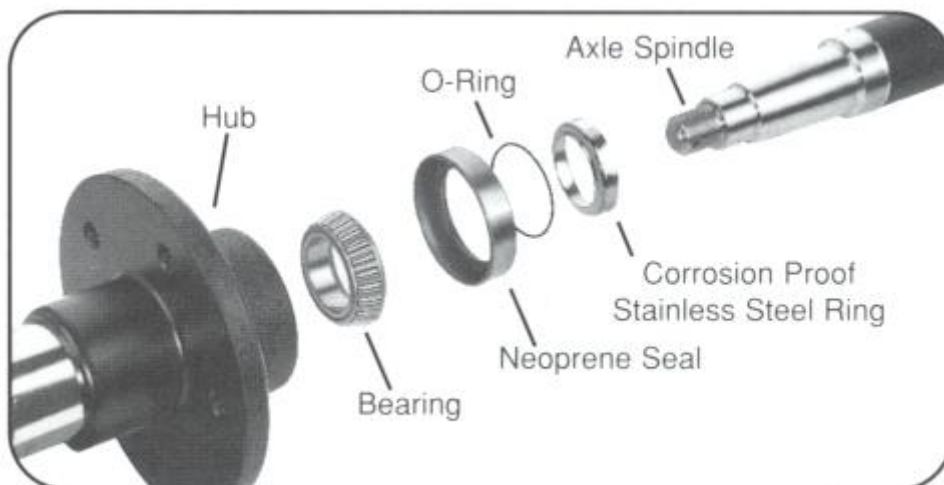
WHEEL STUDS

PART No.	DESCRIPTION	FINISH	THREAD
PD2400	LUG BOLT	ZINC	13/16"



PD2300

PE - BEARINGS, RACES & SEALS



BEARING KITS

PART NO.	DESCRIPTION	SPINDLE SIZE
PE1100	BEARING KIT	1-1/16"
PE1101	BEARING KIT (UFP STYLE)	1-1/16"
PE1150	BEARING KIT	1-3/8X1-1/16"
PE1151	BEARING KIT (UFP STYLE)	1-3/8X1-1/16"
PE1200	BEARING KIT	1-3/4X1-1/4"
PE1201	BEARING KIT (UFP STYLE)	1-3/4X1-1/4"
PE1250	BEARING KIT, HEAVY DUTY	1-3/4X1-1/4"
PE1251	BEARING KIT, HEAVY DUTY (UFP STYLE)	1-3/4X1-1/4"
PE1255	BEARING KIT 8 LUG	1 3/4X1 1/4
PE1256	BEARING KIT, 8 LUG (UFP STYLE)	1-3/4X1-1/4"



PE1251

**ALL BEARING KITS INCLUDE: SEAL, INNER BEARINGS, OUTER BEARINGS, INNER RACE, OUTER RACE & COTTER PIN
UFP STYLE KITS USE RACE PART NO. PE1749 [68110], NON-UFP STYLE KITS USE RACE PART NO. PE1750 [68111]

BEARINGS

PART NO.	DESCRIPTION	SPINDLE SIZE	COMMERCIAL NUMBER
PE1400	BEARING	1-1/16"	44649
PE1450	BEARING	1-3/8"	68149
PE1500	BEARING	1-1/4"	67048
PE1550	BEARING	1-1/4"	15123
PE1555	BEARING, 8LUG	1-1/4"	4T-14125A
PE1600	BEARING	1-3/4"	25580



PE1800

RACES

PART NO.	DESCRIPTION	SPINDLE SIZE	COMMERCIAL NUMBER
PE1710	RACE	1-1/16"	44610
PE1749	RACE (UFP)	1-3/8"	68110
PE1750	RACE (NON-UFP)	1-3/8"	68111
PE1800	RACE	1-1/4"	67010
PE1850	RACE, 6 LUG	1-1/4"	15245
PE1855	RACE, 8 LUG	1-1/4"	4T-14276
PE1900	RACE	1-3/4"	25520



PE1800

SEALS

PART NO.	DESCRIPTION	SPINDLE SIZE	COMMERCIAL NUMBER
PE2010	SEAL (UCF)	1-1/16"	198-125
PE2015	SEAL	1-1/16"	198-138
PE2050	SEAL (UCF)	1-3/8"	255-171
PE2055	SEAL	1-3/8"	257-168
PE2100	SEAL (FOR 4X4 TORSION AXLES)	1-3/4"	22333
PE2101	SEAL	1-3/4"	21333



PE2101

SPINDLE SEAL KITS

PART NO.	SPINDLE SIZE
PE2160	1-3/8"
PE2162	1-1/16"
PE2164	1-3/4

**SPINDLE SEAL KITS ARE FOR UFP SPINDLES AND ARE SOLD IN PAIRS



PE2160

DUST CAPS

PART NO.	NOTE	SIZE
PE2250	STANDARD	1" (1.980)
PE2301	WITH CENTER HOLE	1.980
PE2302	FOR DRUM ONLY	2.441
PE2303	WITH HOLE, FOR 6 LUG DRUM	2.441
PE2304	FOR 6 LUG HUB OR DISC	2.328
PE2305	FOR 8 LUG HUB	2.717



PE2250

RUBBER PLUGS FOR CENTER HOLE CAP

PART NO.	SIZE
PE2307	1.980
PE2311	2.328



PE2307

PF - BEARING PROTECTORS

BEARING PROTECTORS

PART NO.	NOTES	SIZE
PF1053	SET S/S (PAIR)	1.98
PF1054	S/S (EACH)	1.98
PF1101	(EACH) FOR 6 LUG DRUM	2.441
PF1102	(EACH) FOR 6 LUG HUB AND DISC	2.328
PF1103	(EACH) FOR 8 LUG HUB AND DISC	2.717



PF1054

BEARING PROTECTOR BRAS

PART NO.	SIZE
PF1060	1.98
PF1063	2.441/2.717



PF1060

PG - BRAKES



10" BRAKE KITS

PART NO.	DESCRIPTION	CAPACITY
PG1030	DISC BRAKE KIT, COMPLETE FOR SINGLE AXLE	6000 LBS.
PG1001	DRUM BRAKE KIT, COMPLETE WITH PREMIER BRAKES	6000 LBS.
PG1040	SECOND AXLE DISC BRAKE KIT	N/A
PG1334	BRAKE LINE KIT - UPGRADE SINGLE AXLE TO TRIPLE AXLE	N/A

DISC BRAKE KITS INCLUDE:

- (2) INNER BEARINGS, 1-3/8"
- (2) OUTER BEARINGS, 1-1/6"
- (2) SEALS, 1-3/8"
- (1) ACTUATOR
- (1) 8' BRAKE LINE
- (1) 23' BRAKE LINE
- (2) DISC ROTOR & HUB - DACRO 5L
- (1) DISC BRAKE CALIPER ASSEMBLY LH
- (1) DISC BRAKE CALIPER ASSEMBLY RH
- (4) 7/16" STAR WASHER
- (4) 7/16"x1" BOLT
- (1) 5 WAY WIRE HARNESS 32'
- (6) PLASTIC WIRE TIE HD 14-1/2"
- (3) PLATED BOLTS 1/2"x4-1/2" GRADE 5
- (3) PLATED NUT LOCK NI 1/2"-13

DRUM BRAKE KITS INCLUDE:

- (2) HUB&DRUM W/RACE 5L
- (2) INNER BEARINGS, 1-3/8"
- (2) OUTER BEARINGS, 1-1/6"
- (2) SEALS, 1-3/8"
- (2) DUST CAP 1" (1.980)
- (1) ACTUATOR
- (1) T-FITTING
- (1) 1' BRAKE LINE
- (1) 6' 6" BRAKE LINE
- (1) 23' BRAKE LINE
- (2) BRAKE CLUSTER
- (7) PLASTIC WIRE TIE HD 14-1/2"
- (8) PLATED BOLT 7/16" X 1" GRADE 5
- (8) PLATED NUT LOCK NI 7/16"-14

SECOND AXLE DISC BRAKE KITS INCLUDE:

- (2) INNER BEARINGS, 1-3/8"
- (2) OUTER BEARINGS, 1-1/6"
- (2) SEALS, 1-3/8"
- (1) 4' BRAKE LINE
- (1) 8' BRAKE LINE
- (2) DISC ROTOR & HUB-DACRO 5L
- (1) DISC BRAKE CALIPER ASSEMBLY LH
- (1) DISC BRAKE CALIPER ASSEMBLY RH
- (4) 7/16" STAR WASHER
- (4) 7/16"x1" BOLT
- (6) PLASTIC WIRE TIE HD 14-1/2"

PG1334 KIT INCLUDES:

- (1) HYD. BRAKE/BRASS T-FITTING
- (1) 1' BRAKE LINE
- (1) 4' BRAKE LINE
- (1) 6' 6" BRAKE LINE
- (12) PLASTIC WIRE TIE, HD 14-1/2"

ACTUATORS FOR 3" TONGUES, TITAN DRUMS

PART NO.	DESCRIPTION	CAPACITY
PG1050	FOR TITAN DRUM ONLY	6000 LBS.
PG1060	FOR TITAN DRUM ONLY	7500 LBS.



PG1050

** ALL UFP & DEMCO ACTUATORS INCLUDE A BACKUP SOLENOID

ACTUATORS FOR 3" TONGUES, IN-LINE

PART NO.	DESCRIPTION	CAPACITY
PG1080	IN-LINE, BOLT-ON (UFP)	6000 LBS.
PG1088	IN-LINE, DISC, 3 HOLE (UFP)	6000 LBS.
PG1090	IN-LINE, DISC (UFP)	7000 LBS.



PG1060



PG1080



PG1088



PG1090



PG1095

ACTUATORS FOR 3" TONGUES, LARGE CAPACITY

PART NO.	DESCRIPTION	CAPACITY
PG1095	TRIPLE AXLE DISC (UFP)	16000 LBS.
PG1096	WITH LOCKOUT INSTALLED (DEMCO)	20000 LBS.



PG1096

BRAKE HOSES

PART NO.	LENGTH
PG1178	1'
PG1173	1' 6"
PG1179	2'
PG1181	4'
PG1183	6' 6"
PG1184	7'
PG1185	16'
PG1186	8'
PG1187	18'
PG1188	19'
PG1190	21'
PG1192	23'
PG1193	24'
PG1194	26'



PG1178



PG1190

**Brake line colors may vary.

BRAKE LINE KITS FOR SINGLE AXLE

PART NO.	LENGTH
PG1325	19'
PG1326	21'
PG1328	23'
PG1330	24'
PG1336	26'

BRAKE LINE KITS INCLUDE:

- (1) T-FITTING
- (1) 1' BRAKE LINE
- (1) 6' 6" BRAKE LINE
- (1) 19' - 26' BRAKE LINE (DEPENDENT ON THE KIT)
- (10) PLASTIC WIRE TIE, HD 14-1/2"
- (2) CALIPER FITTING PLUGS (FOR DISC BRAKES ONLY)



PG2200

BRAKE SYSTEM COMPONENTS

PART NO.	DESCRIPTION
PG1175	BRAKE/BRASS T-FITTING
PG2200	BRAKE LINE COUPLER, 3/16"



PG1150

10" HUB & DRUM ASSEMBLIES

PART NO.	BOLT PATTERN
PG1150	5Lx4.5"

DACROTIZED DISC ROTOR & HUBS

PART NO.	DIAMETER	BOLT PATTERN
PG2026-1	10"	5Lx4.5"
PG2027-1	12"	6Lx5.5"
PG2028-1	12"	8Lx6.5"



PG2026-1

DISC BRAKE ASSEMBLIES

PART NO.	FINISH	DIAMETER	BOLT PATTERN
PG2031	DACROTIZED	10"	5Lx4.5"
PG2031-2	STAINLESS STEEL	10"	5Lx4.5"
PG2033	DACROTIZED	12"	6Lx5.5"
PG2033-2	STAINLESS STEEL	12"	6Lx5.5"
PG2035	DACROTIZED	12"	8Lx6.5"
PG2035-2	STAINLESS STEEL	12"	8Lx6.5"

DISC BRAKE ASSEMBLIES INCLUDE:

- (2) INNER BEARINGS
- (2) OUTER BEARINGS
- (2) SEALS
- (2) ROTORS WITH INTEGRAL HUBS
- (2) CALIPERS
- (8) MOUNTING BOLTS
- (8) STAR WASHERS
- (2) COTTER PINS

BRAKE CLUSTERS

PART NO.	CONFIGURATION	DIAMETER	BOLT PATTERN
PG1750	PAIR	8"	N/A
PG2300	PAIR	10"	N/A
PG2300L	LEFT	10"	N/A
PG2300R	RIGHT	10"	N/A
PG2310	PAIR	12"	N/A
PG2300L	LEFT	12"	N/A
PG2300R	RIGHT	12"	N/A

PG1150 ASSEMBLY INCLUDES:

- (2) HUB&DRUM W/RACE, 10" 5L
- (2) BEARING 1-1/16"
- (2) BEARING 1-3/8"
- (2) SEAL 1-3/8"
- (2) DUST CAP 1" (1.980)
- (2) COTTER PIN
- (5) LUG NUTS



PG2310

MISCELLANEOUS DRUM BRAKE COMPONENTS

PART NO.	DESCRIPTION
PG1078	BRAKE LOCKOUT CAP, IN-LINE (UFP)
PG2100	BRAKE FLANGE, 4 BOLT
PG2150	BRAKE FLANGE, 5 BOLT
PG2252	BRAKE LOCKOUT, ELECTRIC (QUALITY)
PG2350	BRAKE BATH KIT
PG3020	BRAKE WHEEL CYLINDER, L/H
PG3021	BRAKE WHEEL CYLINDER, R/H
PG3052	MODEL 60 LEVER-LOCK REPAIR KIT (TITAN)



PG1078

MASTER CYLINDERS

PART NO.	DESCRIPTION
PG3060	MODEL 60 MASTER CYLINDER KIT (TITAN)
PG3100	MODEL 6 MASTER CYLINDER (TITAN)
PG3206	MODEL 10 MASTER CYLINDER (TITAN)
PG3225	DEMCO MASTER CYLINDER FOR 20K ACTUATOR
PG4814	MASTER CYLINDER WITHOUT SOLENOID (UFP) **

**PLEASE CALL FOR AVAILABILITY



PG3060



PG3100



PG3206



PG225

MASTER CYLINDER CAPS

PART NO.	DESCRIPTION
PG3102	MODEL 6 MASTER CYLINDER CAP (TITAN)
PG3104	MODEL 60 MASTER CYLINDER CAP (TITAN)
PG3208	MODEL 10 FILLER CAP (TITAN)
PG4817	RESERVOIR COVER PLATE (UFP) **
PG4819	RESERVOIR PLUG (UFP)

**PLEASE CALL FOR AVAILABILITY



PG3104



PG3102



PG3208

Either style may be shipped



PG4819

DISK BRAKE CALIPERS

PART NO.	DESCRIPTION
PG5003	DISC BRAKE CALIPER ASSEMBLY, LH
PG5005	DISC BRAKE CALIPER ASSEMBLY, RH



PG5003

ELECTRIC OVER HYDRAULIC

PART NO.	DESCRIPTION
PG3240	HYDRASTAR ELECTRIC OVER HYDRAULIC 20K ACTUATOR
PG3250	ELECTRIC OVER HYDRAULIC BRAKE KIT - 20K
PG3229	TEKONSHA ELECTRIC BRAKE CONTROLLER
PG3231	AUSCO ELECTRIC BRAKE CONTOLLER TBEC
PG3232	TEKONSHA AUSCO BREAKAWAY KIT 20005



PG3240



PG3250

LATCH REPLACEMENT KITS

PART NO.	DESCRIPTION
PG4808	LATCH REPLACEMENT KIT (UFP) FOR 2" BALLS ONLY
PG4822	A-70 LATCH REPLACEMENT KIT (UFP) FOR 2" BALLS ONLY

**PLEASE CALL FOR AVAILABILITY



PG4808

BRAKE CALIPER COMPONENTS

PART NO.	DESCRIPTION
PG4850	INNER PAD DB35 (UFP)
PG4851	OUTER PAD DB35 (UFP)
PG4855	SINGLE BANJO (UFP)
PG4857	BANJO BOLT (UFP)
PG4858	BANJO WASHER (UFP)
PG4859	SS BLEEDER SCREW (UFP)
PG4862	CALIPER FITTING PLUG
PG5006	7/16" STAR WASHER FOR DISC CALIPER
PG5007	7/16" X 1" SHCS BOLT FOR DISC CALIPER
PG5058	DISC BRAKE ADAPTER PLATE FOR 7000# TORSION



PG4859



PG5058

MISCELLANEOUS DISC BRAKE SYSTEM COMPONENTS

PART NO.	DESCRIPTION
PG3054	MODEL 60 DAMPER (TITAN)
PG3056	MODEL 60 BREAK-AWAY LEVER ASSEMBLY (TITAN)
PG3210	MODEL 10 CONNECTOR (TITAN)
PG3216	MODEL 10 BREAK-AWAY LEVER ASSEMBLY(TITAN)
PG4801	RETAINING RING (UFP) **
PG4812	BREAK AWAY CABLE (UFP)
PG4815	SOLENOID ASSEMBLY (UFP) **
PG4820	HITCH PIN KIT (UFP) **
PG4823	A-70 HITCH PIN KIT (UFP) **
PG4860	PRESS-IN STUD (STANDARD) (UFP)
PG4861	PRESS IN STUD (LONG) UFP

**PLEASE CALL FOR AVAILABILITY



PG3056



PG4815

PH - AXLE COMPONENTS

TORSION ARMS

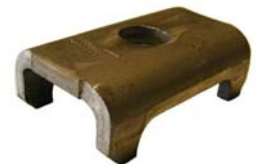
PART NO.	DESCRIPTION
PH1325	TORSION ARM/SPINDLE 3" X 3" (UFP)
PH1330	TORSION ARM/SPINDLE 3-1/2" (UFP)
PH150-40	FA-35 ARM+SPINDLE 3500# (UCF)
PH150-42	ARM+SPINDLE 5200/7000# L/H (UCF)
PH150-43	ARM+SPINDLE 5200/7000# R/H (UCF)



PH150-40

TORSION AXLE COMPONENTS

PART NO.	DESCRIPTION
PH150-54	FC-70E CARTRIDGE 7000# (UCF)
PH150-62	5200/7000# TORSION AXLE BUSHING (UCF)
PH150-72	FK70 MOUNTING BRACKET 5200/7000# (UCF)
PH2104	AXLE SPRING TAB 3" X 2" (UFP)
PH2105	TANG WASHER
PH2106	AXLE SPRING TAB 2" X 1-1/2" (UFP)



PH2104

1-1/16" UFP SPINDLES

PART NO.	DESCRIPTION	CAPACITY
PH1752	TURNT DOWN	1500 LBS.
PH1800	WITH RING WELD MOUNT	2500 LBS.
PH1803	POSI LUBE	2500 LBS.



PH1803

1-3/8" X 1-1/16" UFP SPINDLES

PART NO.	DESCRIPTION	CAPACITY
PH1849	WITH 10" BRAKE FLANGE	3500 LBS.
PH1855	STANDARD	3500 LBS.



PH1903

1-3/4" X 1-1/4" UFP SPINDLES

PART NO.	DESCRIPTION	CAPACITY
PH1900	STANDARD	5200/7000
PH1903	POSI-LUBE	5200/7000
PH1905	WITH FLANGE	5200/7000
PH1906	POSI-LUBE WITH FLANGE	5200/7000



PH1905

SPINDLE COMPONENTS

PART NO.	DESCRIPTION	SIZE
PH1950	SPINDLE NUT	3/4" ID
PH1980	SPINDLE NUT	1-3/16" ID
PH2000	SPINDLE NUT	1" ID
PH2012	COTTER PIN	1/8" X 1-1/4"
PH2060	AXLE WASHER	1"
PH2065	3/4" AXLE D WASHER	3/32"
PH2066	3/4" AXLE D WASHER	3/16"
PH2070	1" AXLE D WASHER (TORSION)	N/A
PH2105	TANG WASHER	N/A
PH2108	SPINDLE NUT RETAINER	N/A



PH1980

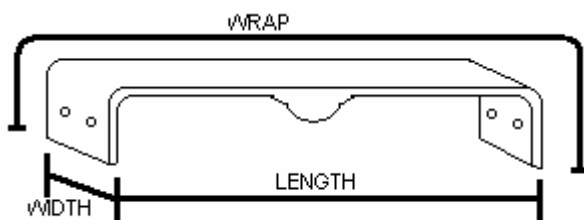
PI - FENDERS

PLASTIC FENDERS WITH STEPS

PART NO.	TIRE SIZE	WIDTH	LENGTH	FINISH
PI0510	13"	9"	29"	WHITE
PI0512	14"	9.7"	31"	WHITE



PI0512



PI1054



PI1662

GALVANIZED FENDERS FOR SINGLE AXLE TRAILERS

PART NO.	DESCRIPTION	TIRE SIZE	WIDTH	LENGTH	WRAP
PI1002	PUNCHED FOR 8" & 12" TIRES	8"	7"	21"	24"
PI1005	WITH BRACKET FOR 8" & 12" TYPE A	8" & 12"	7"	21"	24"
PI1025	1/2 ROUND	12"	5-1/2"	24"	32"
PI1200	WITH BRACKETS	13"	9"	29"	33"
PI1460	STANDARD	13"	7-1/4"	27-1/2"	37"
PI1510	STANDARD	14"	8-1/2"	29-1/2"	40-3/4"
PI1515	STANDARD	15"	9"	32"	50"
PI1631	CUSTOM SQUAREBACK	13"	9"	32"	43"
PI1662	CUSTOM SQUAREBACK	14"	9"	32"	45"



PI1753



PI1840



PI1790

ALUMINUM FENDERS FOR SINGLE AXLE TRAILERS

PART NO.	DESCRIPTION	TIRE SIZE	WIDTH	LENGTH	WRAP
PI1751	STANDARD	13"	7-1/2"	29"	43"
PI1752	STANDARD	13"	9"	29"	43"
PI1753	FOR PONTOON TRAILERS	13"	9"	27"	38"
PI1790	JEEP STYLE	13" & 14"	9"	33"	53"
PI1805	STANDARD	14"	9"	31-1/2"	48"
PI1811	STANDARD	15"	9"	33"	54"
PI1840	STANDARD	8" & 12"	7-1/2"	21"	24"



PI1250



PI1570

GALVANIZED FENDERS FOR TANDEM AXLE TRAILERS

PART NO.	DESCRIPTION	TIRE SIZE	WIDTH	LENGTH	WRAP
PI1250	STANDARD	13" & 14"	9"	60"	72"
PI1300	WITH BRACKETS	13" & 14"	9"	60"	72"
PI1350	STANDARD	15"	10"	68"	77"
PI1400	WITH BRACKETS	15"	10"	68"	77"
PI1560	TEARDROP	13"	7-1/2"	56-1/4"	65"
PI1570	TEARDROP	14"	8-1/2"	64"	74"
PI1715	TEARDROP	15"	9-1/2"	67"	87"

ALUMINUM FENDERS FOR TANDEM AXLE TRAILERS

PART NO.	DESCRIPTION	TIRE SIZE	WIDTH	LENGTH	WRAP
PI1855	STANDARD	13"	9"	60"	79"
PI1857	TEARDROP	13"	9"	60"	77"
PI1905	STANDARD	14"	10"	68"	89"
PI1906	TEARDROP	14"	10"	68"	91"
PI1909	NARROW TEARDROP	14"	9"	68"	87"
PI1910	FENDER, TEARDROP	16"	12"	72"	97"

ALUMINUM FENDERS FOR TRIPLE AXLE TRAILERS

PART NO.	TIRE SIZE	WIDTH	LENGTH	WRAP
PI1954	16"	12"	112"	137"
PI1956	14" & 15"	10"	102"	127"



PI0100

GALVANIZED FENDER BRACKETS

PART NO.	DESCRIPTION
PI0100	SINGLE FOR 10" & 12" TIRES

ALUMINUM FENDER BRACKETS

PART NO.	LENGTH
PI2018	27"
PI2020	24"
PI2025	22"
PI2030	20"



PI2030

ALUMINUM FENDER BRACES

PART NO.	DESCRIPTION
PI2065	(FOR AIRBOAT) 3" X 4" X 3"



PI1970

FENDER PAD FOR ALUMINUM FENDERS

PART NO.	DESCRIPTION	MATERIAL	TIRE SIZE	COLOR
PI1960	SINGLE	CARPETED	13"	BLK/GRY
PI1970	SINGLE	CARPETED	14"	BLK/GRY
PI1972	SINGLE	UHMW	14"	BLACK
PI1980	TANDEM	CARPETED	13"	BLK/GRY
PI1990	TANDEM	CARPETED	14"	BLK/GRY
PI1991	TANDEM	UHMW	14"	BLACK

FENDER PAD FOR GALVANIZED FENDERS

PART NO.	DESCRIPTION	MATERIAL	TIRE SIZE	COLOR
PI2130	SINGLE	CARPETED	13"	BLACK
PI2160	SINGLE	CARPETED	14"	BLACK

STEP PADS FOR ADJUSTABLE UNDERCARRIAGES

PART NO.	LENGTH	FINISH
PI1996	10"	ALUM.
PI1999	11"	ALUM.

**PLEASE SPECIFY LEFT-FRONT, LEFT-REAR, RIGHT-FRONT OR RIGHT-REAR WHEN ORDERING STEP PADS! HOLES ARE PRE-DRILLED FOR FENDER MOUNTING, BUT HOLES FOR FRAME MOUNTING WILL NEED TO BE DONE BY DEALER.



PI1999

STEP PADS WITH BOOTS

PART NO.	LENGTH	FINISH
PI1996-1	10"	ALUM.
PI1997	11"	ALUM.
PI2000	12"	ALUM.
PI2001	14"	ALUM.
PI2002	14-1/2"	ALUM.
PI2003	15"	ALUM.
PI2004	15-1/2"	ALUM.
PI2011-1	16"	ALUM.
PI2012-1	16-1/2"	ALUM.

**PLEASE SPECIFY LEFT-FRONT, LEFT-REAR, RIGHT-FRONT OR RIGHT-REAR WHEN ORDERING STEP PADS! HOLES ARE PRE-DRILLED FOR FENDER MOUNTING, BUT HOLES FOR FRAME MOUNTING WILL NEED TO BE DONE BY DEALER.



PI1997



PI2004

ALUMINUM STEP PADS

PART NO.	LENGTH
PI2005	12"
PI2006	14"
PI2008	15"
PI2009	15-1/2"
PI2011	16"
PI2012	16-1/2"
PI2015	13-1/2"
PI2016	12-1/2"

**PLEASE SPECIFY LEFT-FRONT, LEFT-REAR, RIGHT-FRONT OR RIGHT-REAR WHEN ORDERING STEP PADS! HOLES ARE PRE-DRILLED FOR FENDER MOUNTING, BUT HOLES FOR FRAME MOUNTING WILL NEED TO BE DONE BY DEALER.



PI2009

STEP PAD BOOTS

PART NO.	DESCRIPTION	FINISH
PI2100	L/H (B)	BLACK
PI2110	R/H (A)	BLACK



PI2110

**PLEASE SPECIFY LEFT-FRONT, LEFT-REAR, RIGHT-FRONT OR RIGHT-REAR WHEN ORDERING STEP PAD BOOTS!

PJ – SPRINGS

SINGLE EYE SPRINGS

PART NO.	LENGTH	WIDTH	LEAF	CAPACITY
PJ1000	24"	1-3/4"	1	280 LBS
PJ1050	24"	1-3/4"	3	750 LBS
PJ1055	24"	1-3/4"	4	1000 LBS
PJ1100	30"	1-3/4"	2	950 LBS
PJ1150	30"	1-3/4"	3	1500 LBS
PJ1200	30"	1-3/4"	4	2000 LBS
PJ1250	30"	1-3/4"	5	2400 LBS



PJ1050

DOUBLE EYE SPRINGS

PART NO.	LENGTH	WIDTH	LEAF	CAPACITY
PJ1350	20"	1-3/4"	3	1500 LBS
PJ1370	25-1/4"	1-3/4"	3	1500 LBS
PJ1400	25-1/4"	1-3/4"	3	2000 LBS
PJ1450	25-1/4"	1-3/4"	4	2500 LBS
PJ1500	25-1/4"	1-3/4"	5	2950 LBS
PJ1700	25-1/4"	1-3/4"	6	3500 LBS.



PJ1050

PK – UNDERCARRIAGE HARDWARE

AXLE MOUNTING KITS

PART NO.	DESCRIPTION
PK1000	STANDARD KIT - 1-1/2" SQ TUBE AXLE
PK1050	HEAVY DUTY KIT - TUBE AXLE
PK1100	HEAVY DUTY KIT – DOUBLE EYE SPRINGS FOR A SINGLE AXLE TRAILER
PK1150	HEAVY DUTY KIT – 2X2 TANDEM AXLE
PK1150-SS	HEAVY DUTY KIT – 2X2 TANDEM AXLE, STAINLESS STEEL
PK1152	HEAVY DUTY KIT – 2X3 TANDEM AXLE



PK1250

PK1000 KITS INCLUDE:

- (2) 3 - HOLE PLATES
- (2) PLATED BOLTS 1/2"X3-1/2" GRADE 5
- (2) PLATED LOCK NUTS 1/2"-13
- (4) HEX NUTS 1/2"-13 GALV.
- (4) WASHER FLAT USS 1/2 HDG
- (4) WASHER LOCK 1/2 HDG
- (2) U-BOLTS 1/2"X2-3/4"X4"

PK1050 KITS INCLUDE:

- (2) 5 - HOLE PLATES
- (2) PLATED BOLTS 1/2"X3-1/2" GRADE 5
- (2) PLATED LOCK NUTS 1/2"-13
- (8) HEX NUTS 1/2"-13 GALV.
- (8) WASHER FLAT USS 1/2 HDG
- (8) WASHER LOCK 1/2 HDG
- (4) U-BOLTS 1/2"X2-1/16"X5-13/16"

PK1100 KITS INCLUDE:

- (2) 5 - HOLE PLATES
- (4) 2 - HOLE SHACKLE PLATE
- (2) ALUM.SPACER D-EYE SPRING 1-3/4"
- (6) PLATED BOLTS 1/2"X3-1/2" GRADE 5
- (6) PLATED LOCK NUTS 1/2"-13
- (8) HEX NUTS 1/2"-13 GALV.
- (8) WASHER FLAT USS 1/2 HDG
- (8) WASHER LOCK 1/2 HDG
- (4) U-BOLTS 1/2"X2-1/16"X5-13/16"

PK1150 KITS INCLUDE:

- (4) 5 - HOLE PLATES
- (8) 2 - HOLE SHACKLE PLATE
- (12) PLATED BOLTS 1/2"X3-1/2" GRADE 5
- (2) PLATED BOLTS 1/2"X4" GRADE 5
- (14) PLATED LOCK NUTS 1/2"-13
- (16) HEX NUTS 1/2"-13 GALV.
- (32) WASHER FLAT USS 1/2 HDG
- (16) WASHER LOCK 1/2 HDG
- (8) U-BOLTS 1/2"X2-1/16"X5-13/16"

GALVANIZED SPRING HANGERS

PART NO.	DESCRIPTION
PK1701	ML SPRING HANGER, FORMED 1 PC
PK1702	ML SPRING HANGER, 2PC H.D. 1/2 HOLES
PK1703	ML SPRING HANGER, 2PC H.D. 3/8 HOLES
PK1731	SLIPPER SPRING HANGER



PK1701



PK1702

GALVANIZED PLATES

PART NO.	DESCRIPTION
PK1200	3 - HOLE PLATE
PK1205	3 - HOLE BUNK PLATE
PK1250	5 - HOLE PLATE
PK1300	2 - HOLE SHACKLE PLATE
PK1310	2 - HOLE PLATE (PWC-4 BACKING PLATE)
PK1320	1 - HOLE SLOT PLATE



PK1200



PK1300



PK1320

GALVANIZED UNDERCARRIAGE COMPONENTS

PART NO.	DESCRIPTION
PK1350	U-BOLT FOR 3-HOLE PLATE
PK1450	BOLT 1/2 X 3-1/2 WITH LOCK NUT
PK1558	EQUALIZER BUSHING
PK1800	EQUALIZER PLATE, BOLT-ON 5-3/4
PK1810	EQUALIZER PLATE, BOLT-ON 4-1/2
PK1850	SPRING SLIP COLLAR, WELD-ON RAW
PK1950	6-1/2" EQUALIZER
PK2000	8" EQUALIZER



PK1800



PK2043

GALVANIZED BOLT-ON STEPS

PART NO.	STEP SIZE
PK2043	8"
PK2045	12"

UNDERCARRIAGE ANGLES FOR SINGLE AXLE

PART NO.	SIZE	FITS	SIDE
PK2250	38"	10/12" TIRE	LEFT
PK2260	38"	10/12" TIRE	RIGHT
PK2252	38" (WELDED LOW)	8/10/12" TIRE	LEFT
PK2262	38" (WELDED LOW)	8/10/12" TIRE	RIGHT



PK2321

UNDERCARRIAGE ANGLES FOR SINGLE AXLE

PART NO.	SIZE	FITS	STEP SIZE	SIDE
PK2320	38"	13" TIRE	NONE	RIGHT
PK2321	38"	13" TIRE	NONE	LEFT
PK2350	38"	13" TIRE	8"	LEFT
PK2360	38"	13" TIRE	8"	RIGHT
PK2400	38"	13" TIRE	12"	LEFT
PK2410	38"	13" TIRE	12"	RIGHT
PK2450	38"	14" TIRE	8"	LEFT
PK2460	38"	14" TIRE	8"	RIGHT
PK2500	38"	14" TIRE	12"	LEFT
PK2510	38"	14" TIRE	12"	RIGHT
PK2515	41"	15" TIRE	12"	LEFT
PK2516	41"	15" TIRE	12"	RIGHT



PK2350



PK2516

UNDERCARRIAGE ANGLES FOR SINGLE AXLE

PART NO.	SIZE	FITS	STEP SIZE	SIDE
PK2540	41" WITH MC STEPS	14" TIRE	7-1/2"	RIGHT
PK2545	41" WITH MC STEPS	14" TIRE	7-1/2"	LEFT

UNDERCARRIAGE ANGLES FOR SINGLE AXLE

PART NO.	SIZE	FITS	STEP SIZE	SIDE
PK2710	CUSTOM	13" TIRE	CUSTOM	LEFT
PK2720	CUSTOM	13" TIRE	CUSTOM	RIGHT
PK2730	CUSTOM	14" TIRE	CUSTOM	RIGHT
PK2740	CUSTOM	14" TIRE	CUSTOM	LEFT



PK2550

UNDERCARRIAGE ANGLES FOR TANDEM AXLE

PART NO.	SIZE	FITS	STEP SIZE	SIDE
PK2550	63.5" ††	10/12" TIRE	NONE	LH/RH
PK2600	63.5"	13" TIRE	8"	LH/RH
PK2650	63.5"	13" TIRE	12"	LH/RH
PK2690	71"	14" TIRE	8"	LH/RH
PK2700	71"	14" TIRE	12"	LH/RH
PK2705	78"	15" TIRE	12"	LH/RH



PK2690

**SEE ALSO "PO" SECTION

††FOR 20" DOUBLE EYE SPRING

UNDERCARRIAGE ANGLES FOR TRIPLE AXLE

PART NO.	SIZE	FITS	STEP SIZE	SIDE
PK2770	112"	14/15" TIRE	12"	LH/RH

PL - LIGHTING

STANDARD LIGHTING

PART NO.	DESCRIPTION
PL1065	AMBER CLEARANCE/MARKER LIGHT
PL1070	RECTANGULAR COMBINATION TAIL LIGHT - RH
PL1080	RECTANGULAR COMBINATION TAIL LIGHT - LH
PL2602	RED 3-LIGHT BAR



PL1065



PL1080

LED LIGHTING

PART NO.	DESCRIPTION
PL1180	WATERPROOF TAIL LIGHT - R/H
PL1182	WATERPROOF TAIL LIGHT - L/H
PL1184	AMBER CLEARANCE/MARKER LIGHT
PL1186	SEALED 3-PIECE LIGHT BAR (RED)
PL1195	TAILLIGHT LENSE R/H



PL1180



PL1186

REFLECTORS

PART NO.	DESCRIPTION
PL1402	AMBER STICK-ON
PL1442	RED STICK-ON

WIRE HARNESSES

PART NO.	SIZE
PL2090	17'
PL2100	20'
PL2110	25'
PL2120	28'
PL2128	32' - 5 WAY
PL2130	33'
PL2140	40'



PL2110



PL2128

ELECTRICAL COMPONENTS

PART NO.	DESCRIPTION
PL2195	2' EXTENSION HARNESS - 4 WAY
PL2196	2' EXTENSION HARNESS - 5 WAY
PL2197	TRUNK CONNECTOR 6' - 5 WAY
PL2198	12" HARNESS EXTENSION - 4 WAY TO 5 WAY
PL2240	LEAD WIRE - 6'
PL2311	INSULATED BUTT CONN. 14-16GA, HEAT SHRINK
PL2315	INSULATED BUTT CONNECTOR 8GA, RED
PL2353	TAPERED RUBBER GROMMET 3/8"
PL2355	PLASTIC WIRE HOLE GROMMET 1/2"
PL2450	CHASSIS WIRE CLIP - SMALL
PL2460	CHASSIS WIRE CLIP - LARGE
PL2960	WIRE HARNESS PROTECTIVE SHEATHING



PL2311



PL2960

TRAILER LIGHT & WIRE KITS

PART NO.	DESCRIPTION
PL2680	KIT FOR GUIDE POLES
PL2750	STANDARD KIT FOR TRAILERS UNDER 80" WIDE
PL2751	LED KIT FOR TRAILERS UNDER 80" WIDE
PL2752	LED KIT FOR TRAILERS OVER 80" WIDE
PL9060-1	ALUMINUM TRAILER CLEARANCE/MARKER LED KIT



PL2355

PL2680 KITS INCLUDE:

- (1) RECTANGULAR COMB T/L LH
- (1) RECTANGULAR COMB T/L RH
- (2) LEAD WIRE - 6'
- (4) INSULATED BUTT CONN 14-16GA BLUE
- (4) WIRE CONNECTOR (MALE)
- (4) WIRE CONNECTOR (FEMALE)
- (1) LT.BRACKET FOR PVC GUIDES (PAIR)
- (2) #10-24X1 TEK SCREW PLTD.
- (4) NUT LOCK NI 1/4 PLTD

PL2750 KITS INCLUDE:

- (1) RECTANGULAR COMB T/L RH
- (1) RECTANGULAR COMB T/L LH
- (2) AMB. CLEARANCE LIGHT - SQ
- (1) WIRE HARNESS 28'
- (4) INSULATED BUTT CONN 14-16GA BLUE
- (1) LICENSE TAG BRACKET
- (10) PLASTIC TIE 8" - TREE MOUNT

PL2751 KITS INCLUDE:

- (1) LED WP TAILLIGHT RH
- (1) LED WP TAILLIGHT LH
- (2) LED AMBER CLEARANCE/MARKER LIGHT
- (1) WIRE HARNESS 28'
- (4) INSULATED BUTT CONN 14-16GA BLUE
- (1) LICENSE TAG BRACKET
- (10) PLASTIC TIE 8" - TREE MOUNT

PL2752 KITS INCLUDE:

- (1) LED WP TAILLIGHT RH
- (1) LED WP TAILLIGHT LH
- (2) LED AMBER CLEARANCE/MARKER LIGHT
- (1) LED SEALED 3-PIECE LIGHT BAR (RED)
- (1) WIRE HARNESS 28'
- (4) INSULATED BUTT CONN 14-16GA BLUE
- (1) LICENSE TAG BRACKET
- (10) PLASTIC TIE 8" - TREE MOUNT

ALUMINUM TAIL LIGHT BRACKETS

PART NO.	DESCRIPTION
PL2870	TREDBRIGHT TAIL LIGHT COVER 3/16"- R/H
PL2875	TREDBRIGHT TAIL LIGHT COVER 3/16"- L/H



PL2870

GALVANIZED TAIL LIGHT BRACKETS

PART NO.	DESCRIPTION
PL2790	TAIL LIGHT BRACKET - BOLT-ON "L" WITH HOOK
PL2800	BOLT-ON LIGHT BRACKET CB
PL2820	TAIL LIGHT BRACKET - BOLT-ON (FOR MAGIC ROLLER)



PL2790

OTHER LIGHTING RELATED COMPONENTS

PART NO.	DESCRIPTION
PL2550	LICENSE TAG BRACKET



PL2820

WIRE TIES

PART NO.	SIZE
PL2944	8" - TREE MOUNT
PL2946	4"
PL2950	11-1/2"
PL2953	14-1/4"
PL2954	14-1/2" – HEAVY DUTY



PL2946

PM – WINCHES

SINGLE SPEED WINCHES

PART NO.	DESCRIPTION	CAPACITY
PM1085	WITH PWC STRAP & 6" HANDLE	900 LBS.
PM1095	WITH PWC STRAP & U-BRACKET	900 LBS.
PM1175	WITH STRAP	1400 LBS.
PM1270	WITH STRAP	1700 LBS.
PM1275	WITH STRAP	1800 LBS.
PM1308	XLT WITH COVER & STRAP	1800 LBS.
PM1415	WITH STRAP	2500 LBS.
PM1445	WITH YELLOW STRAP	3200 LBS.



PM1095

TWO SPEED WINCHES

PART NO.	DESCRIPTION	CAPACITY
PM1355	WITH STRAP	2000 LBS.
PM1455	WITH BRAKE	3500 LBS.



PM1308

WINCH HANDLES

PART NO.	FITS	LENGTH
PM1700	2-SPEED D-L	6"
PM1860	900-1400# D-L	6"
PM1862	1800# D-L	8"
PM1864	2000-2500# D&L	6"
PM1865	2000-2500# D&L	8"
PM1870	3200-3500# D&L	9-1/2"



PM1870

PN – WINCH STRAPS

WINCH STRAPS

PART NO.	NOTES	LENGTH	WIDTH	CAPACITY
PN1340	FOR PWC	12'	2"	1,500 LBS.
PN1350	GRAY	20'	2"	4,000 LBS.
PN1353	YELLOW	20'	2"	10,000 LBS.
PN1360	GRAY	25'	3"	10,000 LBS.
PN1390	YELLOW	20'	3"	10,000 LBS.



PN1353

WINCH STRAP COMPONENTS

PART NO.	DESCRIPTION
PN1400	STANDARD S-HOOK
PN1450	HEAVY DUTY S-HOOK



PO1450

PO – WINCH POSTS

3" X 3" WINCH POST BASES FOR 3" TONGUES

PART NO.	DESCRIPTION	HEIGHT
PO1450	DOUBLE BASE, SUPER HEAVY DUTY STEEP	48"
PO1470	HEAVY DUTY	36"
PO1475	HEAVY DUTY STEEP	20"
PO1480	HEAVY DUTY STEEP	30"
PO1485	HEAVY DUTY (4HOLE) 6000#	30"
PO1490	HEAVY DUTY STEEP	36"
PO1495	HEAVY DUTY STRAIGHT	36"
PO1497	DOUBLE BASE, HEAVY DUTY	36"
PO1498	DOUBLE BASE, SUPER HEAVY DUTY	48"



PO1485

3" X 3" WINCH POST BASE ASSEMBLIES FOR 3" TONGUES

PART NO.	DESCRIPTION	HEIGHT
PO1510	HEAVY DUTY	30"
PO1520	HEAVY DUTY	36"
PO1528	HEAVY DUTY	24"
PO1530	HEAVY DUTY - TANDEM	24"
PO1533	HEAVY DUTY - SINGLE	24"



PO1490

CUSTOM WINCH POSTS

PART NO.	DESCRIPTION
PO1910	WINCH POST TOP CUSTOM 10"
PO1930	WINCH POST - BOW STOP AIRBOAT (LOW STYLE)
PO1940	WINCH POST BOTTOM CUSTOM 10"

WINCH SEAT/POST ASSEMBLIES

PART NO.	DESCRIPTION
PO1932	WINCH SEAT ASSEMBLY AIRBOAT 15"
PO1935	WINCH POST ASSEMBLY (BOW STOP) AIRBOAT, LOW STYLE



PO1940

BOW STOP COMPONENTS

PART NO.	DESCRIPTION
PO1710	DOUBLE V BLOCK BRACKET EACH
PO1720	DOUBLE BOW ROLL ASSEMBLY
PO1730	TANDEM BOW STOP BRACKET (PAIR)
PO1745	BOW STOP ASSEMBLY - TJ WHEELS



PO1710

CHANNEL POST ASSEMBLIES

PART NO.	DESCRIPTION
PO1870	3" WITHOUT WINCH, STANDARD SEAT

BOW REST TOPS

PART NO.	DESCRIPTION
PO1944	LESS ROLLS
PO1956	TWO PIECE WITHOUT WOOD
PO1976	2-PIECE, WITH BUMPERS FOR PINNACLE SERIES



PO1944

BOW REST BOTTOMS

PART NO.	DESCRIPTION
PO1945	BOW REST BOTTOM

BOW REST ASSEMBLIES

PART NO.	DESCRIPTION
PO1946	TWO PIECE TANDEM ROLLERS
PO1949	TWO PIECE TANDEM ROLLERS
PO1949-1	TWO PIECE YELLOW
PO1952	TWO PIECE WITH V-BLOCK
PO1952-1	TWO PIECE WITH 3" ROLLER & BELLS
PO1952-2	TWO PIECE WITH YELLOW 3" ROLL
PO1957	TWO PIECE WITH WOOD
PO1957-1	TWO PIECE WITH WOOD ALOHA ONLY
PO2948	FOR SEA CAT (WORLD CAT) TRAILERS
PO2051	UNIVERSAL WATERCRAFT

WINCH SUPPORT ASSEMBLIES

PART NO.	DESCRIPTION
PO1950-2	WINCH SUPPORT ASSEMBLY, TWO PIECE 30"

ADJUSTABLE WINCH POSTS

PART NO.	DESCRIPTION
PO1960	3" CHANNEL
PO1995	3" X 3" PRO DRIVE AJDUSTABLE (POST/SEAT)
PO3500	2" CHANNEL



PO1945

WINCH POSTS

PART NO.	DESCRIPTION	HEIGHT
PO2091	1-1/2" ANGLE CUT FOR SINGLE PWC WITH 3" TONGUE	16"
PO2092	1-1/2" ANGLE CUT FOR SINGLE PWC WITH 2" TONGUE	16"
PO2151	3" X 3" KENNER STYLE (23" BOW EYE)	23"
PO2156	3" X 3" KENNER STYLE (20-1/2" BOW EYE)	20-1/2"
PO2157	3" X 3" KENNER STYLE (18-1/2" BOW EYE)	18-1/2"
PO2159	3" X 3" KENNER STYLE (15" BOW EYE)	15"
PO2160	3" X 3" 6-HOLE, HEAVY DUTY	30"
PO2161	3" X 3" 4-HOLE, HEAVY DUTY, 6000# MAX	30"
PO2166	3" X 3" HEAVY DUTY	24"
PO2179	3" X 4" (STEEP), SUPER HEAVY DUTY	48"
PO2180	3" X 4"	48"
PO2850	3" X 3" PONTOON, ALUMINUM	46"
PO2939	3" X 3" PONTOON, NO STEPS, HEAVY DUTY	46"
PO2945	3" X 4" SEACAT	30"
PO3400	3" X 3" STANDARD	30"
PO3520	1-1/2" FOR PWC WITH 2" TONGUE	24"



PO2091



PO2151

WINCH POST SUPPORTS

PART NO.	DESCRIPTION
PO1970	SUPPORT FOR 3" CHANNEL

WINCH POST ASSEMBLIES

PART NO.	DESCRIPTION
PO1982	3" CHANNEL
PO2010	CUSTOM 10"
PO2150	SUPER HEAVY DUTY
PO2950	PONTOON
PO2950-2	PONTOON WITH LADDER
PO2951	(POST/SEAT) HEAVY DUTY FOR SKIFF
PO3450	STANDARD 3X3X30", NO WINCH
PO3551	2" CHANNEL, NO WINCH



PO3551

WINCH SEATS

PART NO.	DESCRIPTION
PO2170	HEAVY DUTY
PO2171	HEAVY DUTY (NO ARMS)
PO2190	SUPER HEAVY DUTY
PO2191	SUPER HEAVY DUTY (NO ARMS)
PO2240	STANDARD



PO2170



PO2191

WINCH SEAT AND BOW STOP COMPONENTS

PART NO.	DESCRIPTION
PO1980	BOW STOP "U" BRACKET
PO2042	DBL V-BLOCK ASSEMBLY WITH WINCH FOR PWC
PO2859	PONTOON SEAT/BOW REST ALUMINUM 2"X2"X33"
PO2981	WINCH POST HANDLE WITH PVC FOR PONTOON TRAILERS
PO3295	TURN BUCKLE 20-1/4"



PO1980

WINCH STANDS FOR CATAMARAN TRAILERS

PART NO.	DESCRIPTION
PO2250	2X2X60"
PO2350	2X2X48"



PO2350

PONTOON X-ARMS

PART NO.	DESCRIPTION	LENGTH
PO2610	WITHOUT TABS	96"
PO2612	WITHOUT TABS	84"

PONTOON LADDERS

PART NO.	DESCRIPTION	HEIGHT	FINISH
PO2962	LADDER ONLY	32"	GALVANIZED
PO2862	LADDER ONLY	36"	ALUMINUM
PO2985	LADDER ASSEMBLY*	32"	GALVANIZED

ASSEMBLY INCLUDES: LADDER, 1-HOLE SLOT PLATE, PONTOON WINCH POST HANDLE W/PVC, NUT RETAINER PLATE, NON SKID TAPE AND HARDWARE



PO2962

WINCH POST CAPS

PART NO.	DESCRIPTION
PO3532	2X3 TUBE CAP BLACK (END CAP BOOT)
PO3535	2" CHANNEL WINCH POST CAP
PO3536	3" CHANNEL WINCH POST CAP
PO3538	1-1/2X1-1/2" WINCH POST CAP PLUG
PO3541	3X3 WINCH POST CAP
PO3542	3X4 WINCH POST CAP
PO3545	3X3 C/M END CAP - SLOTTED

UNDERCARRIAGE ASSEMBLIES

PART NO.	DESCRIPTION
PO9007	14" TANDEM WITH 8" STEP
PO9018	63.5" TANDEM WITHOUT STEPS FOR 10" TIRE & WHEEL

**SEE ALSO "PK" SECTION



PO3538

PP - KEEL ROLLS & BUNK SLIDES

V-BLOCKS

PART NO.	DESCRIPTION	COLOR	LENGTH	HOLE SIZE
PP0955	SPLIT V-BLOCK	BLUE	3"	1/2"
PP1000	V-BLOCK	BLACK	3"	1/2"



PP0955

BLACK BOW STOP ROLLERS

PART NO.	LENGTH	HOLE SIZE
PP1050	3"	1/2"
PP1060	4"	1/2"

BLACK ROLLS

PART NO.	DESCRIPTION	LENGTH	HOLE SIZE
PP1150	KEEL ROLL	5"	5/8"
PP1250	KEEL ROLL HD	5"	5/8"
PP1350	KEEL ROLL	8"	5/8"
PP1450	KEEL ROLL	10"	5/8"
PP1550	KEEL ROLL	12"	5/8"
PP1650	END CAP ROLL	3 1/2"	5/8"
PP1750	STRAIGHT ROLL	5"	5/8"
PP1860	STRAIGHT ROLL	12"	5/8"



PP1050

BLACK END CAPS

PART NO.	DESCRIPTION	LENGTH	HOLE SIZE
PP1910	END CAP ROLL	2 1/2"	5/8"
PP1918	END CAP BELL	3"	1/2"
PP1920	END CAP BELL	4"	1/2"



PP1550

GREY BUNK SLIDES

PART NO.	HEIGHT	WIDTH	LENGTH
PP2220	2"	4"	10'
PP2222	2"	4"	END CAP
PP2224	2"	6"	END CAP
PP2226	2"	6"	10'



RUB STRIPS

PART NO.	DESCRIPTION	HEIGHT	WIDTH	LENGTH
PP2258	UHMW W/HOLES	3/8"	12"	8'
PP2260	PLASTIC RUB STRIP	1/2"	1 1/2"	3"
PP2270	PLASTIC RUB STRIP	1/2"	1 1/2"	15"
PP2275	RUB STRIP	1/2"	1 1/2"	18"
PP2280	RUB STRIP	1/2"	1 1/2"	10"
PP2300	KEEL RUB PAD	1/4"	3"	12"

PP2220
(Shown with cap,
Part No. PP2222)

PQ - POLY ROLLS & RUB PADS

POLY RUB PADS

PART NO.	WIDTH	LENGTH
PQ0500	3"	12"
PQ0503	3 1/2"	12"
PQ0505	4"	12"



PQ1050

POLY BOW STOPS

PART NO.	DESCRIPTION	WIDTH
PQ1000	V BOW STOP	3"
PQ1050	BOW STOP	3"
PQ1052	BOW STOP	4"



PQ1200

POLY KEEL ROLLS

PART NO.	WIDTH	HOLE SIZE
PQ1110	5"	5/8"
PQ1150	8"	5/8"
PQ1200	10"	5/8"
PQ1250	12"	5/8"



PQ1452

POLY END CAPS

PART NO.	DESCRIPTION	WIDTH	HOLE SIZE
PQ1450	END CAP	3"	5/8"
PQ1452	END CAP BELL	4"	1/2"
PQ1600	WHEEL	8"	1/2"



PQ2000

YELLOW BOW STOP ROLLERS

PART NO.	WIDTH	HOLE SIZE
PQ2000	4"	1/2"
PQ2010	3"	1/2"

YELLOW END CAPS

PART NO.	DESCRIPTION	WIDTH	HOLE SIZE
PQ2020	END CAP BELL	4"	1/2"
PQ2030	END CAP BELL	3"	1/2"
PQ2070	END CAP	3"	5/8"



PQ2020

YELLOW RUB STRIPS, WOBBLE & KEEL ROLLERS

PART NO.	DESCRIPTION	WIDTH	HOLE SIZE
PQ2040	RUB STRIP	3"	
PQ2050	RIBBED WOBBLE ROLLER	5"	7/8"
PQ2060	KEEL ROLLER H.D.	10"	5/8"

PR – ROLL SHAFTS

5/8" SHAFTS

PART NO.	DESCRIPTION	LENGTH	FOR ROLLER
PR1400	STANDARD	6 1/2"	5"
PR1450	STANDARD	9 1/2"	8"
PR1500	STANDARD	11"	10"
PR1502	FOR POLY ROLL	11 1/2"	10"
PR1510	FOR ROLLER WITH END CAPS	13"	10"
PR1550	STANDARD	13 1/2"	12"
PR1560	FOR ROLLER WITH END CAPS	15 1/4"	12"
PR1600	STANDARD	19 1/4"	18"



PR1550



PR1650

ROLL CAP NUTS

PART NO.	DIA.
PR1350	1/2"
PR1650	5/8"

PS – ROLL BRACKETS & ASSEMBLIES

ROLL ASSEMBLIES

PART NO.	DESCRIPTION	LENGTH
PS1010	KEEL ROLL	5"
PS1160	ADJUSTABLE TONGUE ROLL	5"
PS1165	TONGUE ROLL FOR 2" OR 3" TONGUES	5"
PS1210	TRANSOM SAVER ROLLER, BOLT-ON (YELLOW)	10"
PS1310	KEEL ROLL	10"
PS1310-1	KEEL ROLL (POLY)	10"
PS1313	ONE-PIECE ROLLER	12"
PS1550	PONTOON ROLL	12"



PS1310



PS1550

ROLL BRACKETS

PART NO.	DESCRIPTION	LENGTH
PS1000	ONE PIECE SLOTTED	5"
PS1110	TONGUE SIDE PLATE, EACH 3"	5"
PS1180	TONGUE BRACKET ONLY	5"
PS1300	ONE-PIECE SLOTTED	10"
PS1400	ONE-PIECE SLOTTED	12"
PS1500	TANDEM STRAIGHT SIDE	12"
PS1540	PONTOON	



PS1110



PS1180

ROLL ASSEMBLY COMPONENTS

PART NO.	DESCRIPTION
PS1220	BOLT-ON CUSTOM ROLL TAB L/H
PS1230	BOLT-ON CUSTOM ROLL TAB R/H
PS1760	6" GALVANIZED PIPE LEGS-5/8" HOLE PAIR 1" PIECE
PS1835	ALUM ROLLER BEACHRING PAD- PENNEX



PS1230

ROLLER ASSEMBLIES

PART NO.	DESCRIPTION
PS1880	ALUM I-BEAM 4 ROLLER ASSEMBLY- PENNEX
PS1940	DUAL FIXED BAR WITH ROLLERS - EACH.
PS2050	LONGHORN 1/2" 2X3 + ARM
PS2060	LONGHORN 1/2" 2X2 + ARM
PS2100	QUAD ADJUSTABLE



PS2150

ROLLER ASSEMBLY COMPONENTS

PART NO.	DESCRIPTION
PS1930	ROLLER X-ARM 2X3X32" - EACH
PS193-10	ROLLER X-ARM 2X3X40" - EACH
PS1970	ROLLER X-ARM 2X3X54" - EACH
PS1980	X-ARM PIVOT BEACH RING
PS2150	SET SCREW WITH NUTS
PS2210	NUT RETAINER PLATE



PS2649

CLAMP-ON SOCKETS

PART NO.	DESCRIPTION
PS2310	3" CLAMP-ON SOCKET 1-1/2" SQUARE TUBE
PS2401	4" CLAMP-ON SOCKET 1-1/2" SQUARE TUBE
PS2640	3" X 3" CLAMP-ON ASSEMBLY WITH 12" BUNK BRACKET
PS2647	3X3 CLAMP-ON SOCKET (ML)
PS2649	3X3 CLAMP-ON SOCKET
PS2652	3X3 CLAMP-ON WITH SOCKET FOR 2X2 TUBE
PS2653	ADJUSTABLE UPRIGHT BOW REST CLAMP-ON
PS2653-1	ADJUSTABLE CLAMP-ON FOR 1-1/2" SQUARE TUBE



PS2640

AIRBOAT GUIDE POLES

PART NO.	DESCRIPTION
PS4900	AIRBOAT WELDED GUIDE POLE (26")
PS4901	AIRBOAT GUIDE BOARD POLE 20"



PS2653

BOW BOARD ASSEMBLIES

PART NO.	DESCRIPTION
PS5100	BOW REST TYPE BOW BOARD 6' ASSEMBLY

PT - BUNKS & BRACKETS

20 OUNCE GREY CARPET

PART NO.	LENGTH	WIDTH
PT0277	PER FOOT	9"
PT0278	PER FOOT	20"
PT0279	PER FOOT	24"



PT0277

PLUSH BLACK CARPET

PART NO.	LENGTH	WIDTH
PT0302	PER FOOT	9"
PT0303	PER FOOT	20"
PT0303-1	PER FOOT	24"

CARPETED BUNKS (PRESSURE TREATED PINE)

PART NO.	DESCRIPTION	HEIGHT	WIDTH	LENGTH
PT0294	FLAT	2"	6"	PER FOOT
PT0296	FLAT	2"	8"	PER FOOT
PT0950	FLAT	2"	10"	PER FOOT
PT1001	UPRIGHT	4"	2"	PER FOOT
PT1091	FLAT	2"	4"	PER FOOT



PT1091

CYPRESS BUNKS WITH CARPET

PART NO.	HEIGHT	WIDTH	LENGTH
PT5021	6"	3"	PER FOOT
PT5022	8"	3"	PER FOOT
PT5024	10"	3"	PER FOOT
PT5026	12"	3"	PER FOOT
PT5028	4"	4"	PER FOOT
PT5029	6"	4"	PER FOOT
PT5030	8"	4"	PER FOOT
PT5032	10"	4"	PER FOOT
PT5034	12"	4"	PER FOOT
PT5036	14"	4"	PER FOOT
PT5054	4"***	4"	PER FOOT



PT5026

**BUNK DIAGONAL CUT WITH TRIPLE CARPET

CARPETED SIDE GUIDES (PRESSURE TREATED PINE)

PART NO.	HEIGHT	WIDTH	LENGTH
PT1106	4"	2"	PER FOOT
PT1107	6"	2"	PER FOOT
PT3100	4"	2"	3'
PT3101	4"	2"	2'
PT3102	4"	2"	4'
PT3105	4"	2"	5'
PT3115	4"	2"	8'
PT3125	4"	2"	12'
PT3126	6"	2"	10'



PT3102



PT2080

GALVANIZED SIDE GUIDE ASSEMBLIES

PART NO.	DESCRIPTION
PT2110	NARROW (PAIR)
PT2112	WIDE (PAIR)

*SIDE GUIDE ASSEMBLIES INCLUDE THE FOLLOWING:
 [4] BOLT PLATE-SIDE GD BOARD BRKT
 [4] SIDE GUIDE BOARD BRKT NARROW
 [2] SIDE GUIDE 2X4X3 CARPETED
 [8] CAPSCREW PLTD NC 3/8X3 GR5
 [8] LAG SCREW 3/8X1-1/4 PLTD
 [8] NUT LOCK NI 3/8-16 PLTD



PT2160

GALVANIZED SIDE GUIDE COMPONENTS

PART NO.	DESCRIPTION
PT2100	BRACKET KIT, NO BOARDS
PT2101	BRACKET KIT, WIDE, NO BOARDS
PT2080	CUSTOM BOARD BRACKET (EACH)
PT2140	BOARD BRACKET (SKIFF)
PT2145	BRACKET BOLT PLATE (SKIFF)
PT2150	WIDE BOARD BRACKETS (PAIR)
PT2160	BRACKET BOLT PLATE
PT2170	NARROW BOARD BRACKET (EACH)
PT2180	WIDE BOARD BRACKET (EACH)



PT2180

T-BUNK ASSEMBLIES

PART NO.	DESCRIPTION
PT0301-1	18" T-BUNK ASSEMBLY



PT1550

GALVANIZED BUNK BRACKETS

PART NO.	DESCRIPTION	LENGTH
PT1500	UPRIGHT	12"
PT1550	WITH PIVOT TOP	9"
PT1560	CHANNEL - NO PIVOT TOP	9"
PT1600	WITH PIVOT TOP (ASSEMBLY)	12"
PT1610	WITH PIVOT TOP	12"
PT1620	UPRIGHT	8"



PT1610

GALVANIZED SQUARE TUBE BUNK BRACKETS

PART NO.	DIAMETER	LENGTH
PT1760	1-1/2" X 1-1/2"	12"
PT1762	1-1/2" X 1-1/2"	8"
PT1763	1-1/2" X 1-1/2"	16"



PT1762

BUNK BRACKET U-BOLTS WITH NUTS

PART NO.	LENGTH
PT1650	3"
PT1700	4"

PERMALOCK BUNK BRACKETS

PART NO.	DESCRIPTION	LENGTH
PT1612	ADJUSTABLE	3"
PT1613	FOR 2" CROSSMEMBER	3"
PT1614	ADJUSTABLE	4"



PT1612

GALVANIZED BUNK BRACKET COMPONENTS

PART NO.	DESCRIPTION
PT1520	BUNK YOKE, UPRIGHT
PT1522	BUNK YOKE SUPPORT
PT1630	CROSSARM BUNK SUPPORT
PT1721	BUNK CARRIAGE BOLT WITH HARDWARE



PT1520

GALVANIZED PONTOON WING BRACKETS

PART NO.	DESCRIPTION
PT2018	TDE #44012
PT2025	SINGLE WITH YOKE
PT2026	SINGLE ASSEMBLY WITH YOKE



PT2018

GALVANIZED PIVOT "L" BRACKETS

PART NO.	DESCRIPTION
PT2060	WITHOUT FASTENERS (STANDARD)
PT2070	WITHOUT FASTENERS (WIDE)

BOW SUPPORTS

PART NO.	DESCRIPTION
PT2196	FOR ALS TO 24' 3000-600 (ADJ) WITH 2" X 6" X 6' BOARDS
PT2197	FOR ALS 26'-UP 6000-820 (ADJ) WITH 2" X 6" X 7' BOARDS
PT2200	FOR ML/ALS 2300#-2900# (ADJ) WITH 2" X 6" X 4' BOARDS



PT2025

CROSSMEMBER "L" BRACKETS

PART NO.	DESCRIPTION	LENGTH
PT2205	ROLLER (ADJUSTABLE)	3"
PT2210	CYPRESS BUNK BRACKET (ADJ)	5-1/2"
PT2211	(ADJUSTABLE)	8"
PT2219	TALL (ADJUSTABLE)	10"



PT2205

BUNK MOUNTING COMPONENTS

PART NO.	DESCRIPTION	LENGTH
PT2215	TUBE CROSSMEMBER LIFT KIT	3"
PT2230	FIXED BUNK BRACE-ML	18"
PT2240	FIXED BUNK BRACE - ML	12"



PT2210

PU - TONGUES AND COUPLERS

SWING TONGUE ASSEMBLIES

PART NO.	WIDTH	HEIGHT	LENGTH
PU0520	3"	3"	6'
PU0525	3"	4"	6'

*SWING TONGUE ASSEMBLIES INCLUDE THE FOLLOWING:

- [1] SWING TONGUE REAR SECTION 3X3X4' WITH PIVOT BOX
- [1] 3X3X24" SWING TONGUE FRONT SECTION
- [1] SWING TONGUE HITCH PIN 5/8X5"
- [1] PLATED BOLT, 5/8" X 4-1/2" GRADE 5
- [1] PLATED NI-LOCK NUT 5/8-11



DRAWBAR ASSEMBLIES

PART NO.	THICKNESS	WIDTH	HEIGHT	LENGTH
PU0900	3/16"	3"	5"	25"



PU0520

PLATED SWING TONGUE PINS

PART NO.	DESCRIPTION
PU1428	SWING TONGUE HITCH PIN 5/8X5"

GALVANIZED SWING TONGUE PIVOT BOXES

PART NO.	SIZE
PU1425	3X5 - UFP
PU1426	3X3 - UFP
PU1427	3X4 - UFP



PU1428

ALUMINUM SPACERS

PART NO.	DESCRIPTION	I.D.	O.D.	LENGTH
PU155-02	2-HOLE	1/4"	2"	4-3/4"
PU155-10	STANDARD	3/8"	1-1/2"	2"
PU155-22	STANDARD	1/2"	1-1/2"	3"
PU155-25	D-EYE SPRING			1-3/4"
PU155-30	PWC V BLOCK			3"



PU155-25

COUPLERS

PART NO.	BRAND	BALL SIZE	FITS TONGUE	CAPACITY
PU2010	D & L	2"	2"	3,500 LBS.
PU2020	D & L	2"	2.5"	3,500 LBS.
PU2030	D & L	2"	3"	3,500 LBS.
PU2040	D & L	2"	3"	5,000 LBS.
PU2250	D & L	2-5/16"	3"	8,500 LBS.
PU2260	TITAN	2-5/16"	3"	20,000 LBS.
PU2270	UFP*	2-5/16"	3"	20,000 LBS.



PU2020

*REQUIRES 20K TONGUE BRACKET PU2271

COUPLER BRACKETS

PART NO.	BRAND
PU2271	20K COUPLER BRACKET*



PU2271

*FOR USE WITH COUPLER PART NUMBER PU2270

GALVANIZED TONGUE ANGLE

PART NO.	THICKNESS	WIDTH	HEIGHT	LENGTH
PU6068	3/16"	2"	3"	12"



ALUMINUM TONGUE ANGLE

PART NO.	THICKNESS	WIDTH	HEIGHT	LENGTH
PU6435	1/4"	2.5"	3.5"	12"

PU6435

GALVANIZED GAP TUBING

PART NO.	THICKNESS	HEIGHT	WIDTH	LENGTH
PU3802	11 GAUGE	1.5"	1.5"	PER FOOT
PU3803	11 GAUGE	2"	2"	PER FOOT
PU3804	4 GAUGE	2"	2"	PER FOOT
PU3806	4 GAUGE	2"	3"	PER FOOT
PU3808	11 GAUGE	3"	3"	PER FOOT
PU3810	11 GAUGE	3"	4"	PER FOOT
PU3811	7 GAUGE	3"	4"	PER FOOT
PU3812	6 GAUGE	3"	5"	PER FOOT



PU2040

PV – GUIDES/BOW REST

TONGUE JACKS

PART NO.	DESCRIPTION	CAPACITY
PV0965	SWIVEL MOUNT WITH DUAL WHEEL	1,500 LBS.
PV0976	SQUARE TUBE – D&L	2,500 LBS.
PV0978	SQUARE TUBE – SEAWORTHY	2,500 LBS.
PV1158	SWIVEL MOUNT	1,000 LBS.
PV0925	"A" FRAME, SIDE WIND (WITH FOOT ONLY)	2,000 LBS.



PV0965

SIDEMOUNT JACKS

PART NO.	DESCRIPTION	CAPACITY
PV0905	SIDEMOUNT FIXED*	1,000 LBS.

*REQUIRES PRO I-BEAM JACK MOUNT (PV1020 or PV1021)



PV1020

PRO I-BEAM JACK MOUNTS

PART NO.	SIZE
PV1020	4-1/2"
PV1021	5-1/2"

JACK COMPONENTS

PART NO.	DESCRIPTION
PV1170-1	JACK FOOT PLATE 2000#
PV1175	JACK FOOTPLATE 2000/5000#
PV1192	FULTON JACK 5/8" HITCH PIN #0927050
PV3150	TONGUE JACK WHEEL
PV3200	TONGUE JACK CASTER 2000# 4X2
PV3210	FOOT PLATE
PV3215	SUPPORT PLATE "A" FRAME JACK
PV3220	"A" FRAME JACK MOUNTING HARDWARE



PV1535

VINYL COATED SAFETY CABLES

PART NO.	SIZE	CAPACITY
PV1531	16"	5,000 LBS.
PV1533	30"	5,000 LBS.
PV1535	40"	5,000 LBS.

BASIC SPARE TIRE MOUNT

PART NO.	DESCRIPTION	FINISH
PV1900	INCLUDES LOCK	PLATED



PV1900

PRO SPARE TIRE MOUNTS

PART NO.	DESCRIPTION	FINISH
PV1820	ASSEMBLY	GALV
PV1819	WITH FIVE LUG HUB	GALV
PV1822	U-BOLT BRACKET	GALV



PV1820

SPARE TIRE MOUNTS FOR GALVANIZED TRAILERS

PART NO.	FINISH	HUB SIZE
PV1884	GALV	SIX LUG
PV1915	GALV	FIVE LUG
PV1916	GALV	FIVE LUG

DOUBLE SPARE TIRE MOUNTS FOR GALVANIZED TRAILERS

PART NO.	DESCRIPTION	FINISH
PV1835	WITH TWO FIVE LUG HUBS	GALV
PV1840	WITH TWO SIX LUG HUBS	GALV
PV1841	WITH TWO EIGHT LUG HUBS	GALV



PV1835

ML SERIES SPARE TIRE MOUNTS

PART NO.	DESCRIPTION	FINISH
PV1885	BAR ONLY	GALV
PV1885-1	ASSEMBLY	GALV
PV1886	WITH FIVE LUG HUB	GALV
PV1887	WITH SIX LUG HUB	GALV
PV1888	WITH EIGHT LUG HUB	GALV
PV1896	WITH FIVE LUG DISC	GALV
PV1897	WITH SIX LUG DISC	GALV
PV1898	WITH EIGHT LUG DISC	GALV



PV1885

ML SERIES DOUBLE SPARE TIRE MOUNTS

PART NO.	DESCRIPTION	FINISH
PV1835-1	WITH TWO FIVE LUG DISCS	GALV
PV1840-1	WITH TWO SIX LUG DISCS	GALV
PV1841-1	WITH TWO EIGHT LUG DISCS	GALV



PV1886

GUIDE ASSEMBLIES

PART NO.	DESCRIPTION
PV2155	UPRIGHT GUIDE ASSEMBLY, HEAVY DUTY FOR MCV (PAIR)
PV2158	TUBE GUIDE ASSEMBLY STANDARD, HEAVY DUTY WITH U-BOLTS (PAIR)
PV2165	TUBE GUIDE, SUPER HEAVY DUTY ASSEMBLY 1' LONGER AND TALLER (PAIR)
PV2203	AIRBOAT GUIDE 6' BOARD ASSEMBLY
PV2204	AIRBOAT GUIDE 3' BOARD ASSEMBLY



PV2155

GUIDE COMPONENTS

PART NO.	DESCRIPTION
PV1930	UNIVERSAL GUIDE-ON BRACKET ASSEMBLY (PAIR)
PV2154	PVC SLEEVE & CAP 8' FOR HEAVY DUTY TUBE GUIDE
PV2157	PVC SLEEVE & CAP FOR STANDARD HEAVY DUTY TUBE GUIDE
PV2159	TUBE GUIDE STANDARD HEAVY DUTY WITHOUT PVC (EACH)
PV2161	TUBE GUIDE, HEAVY DUTY WITHOUT PVC 1' LONGER (EACH)
PV2162	TUBE GUIDE, HEAVY DUTY WITHOUT PVC, TALL (EACH)
PV2163	PVC SLEEVE & CAP FOR TALL TUBE GUIDES
PV2164	TUBE GUIDE, SUPER HEAVY DUTY (GUIDE ONLY) 1' LONGER & TALLER (EACH)
PV2166	PVC SLEEVE & CAP FOR SUPER HEAVY DUTY TUBE GUIDE



PV1930

PONTOON GUIDE ASSEMBLIES & COMPONENTS

PART NO.	DESCRIPTION
PV2210	PONTOON GUIDE ARM, 18" POST ONLY
PV2220	PONTOON GUIDE ASSEMBLY, PVC (EACH)
PV2230	PVC SLEEVE FOR PONTOON GUIDE



PV2210

BOW REST/ROLLER-GUIDE ASSEMBLY

PART NO.	DESCRIPTION
PV2280-3	BOW REST/GUIDE PAD ASSEMBLY (18")
PV2282	BOW REST/ROLLER-GUIDE ASSEMBLY
PV2282-3	BOW REST/ROLLER-GUIDE ASSEMBLY (POLY)



PV2210

BOW REST/ROLLER-GUIDE COMPONENTS

PART NO.	DESCRIPTION
PV2156	PVC SLEEVE & CAP FOR BOW REST GUIDE (18")
PV2280-2	BOW REST/GUIDE (ALUM/SB) BAR ONLY 1
PV2281	BOW REST WITHOUT GUIDE (ALUM/SB) 8" LEG
PV2282-2	BOW REST/ROLLER GUIDE, BAR ONLY 8" LENGTH



PV2280-3

TRANSOM SAVER ADAPTER

PART NO.	DESCRIPTION
PV1929	FOR TALS2044-2244*

*REQUIRES BUNK I.D.

STRAPS

PART NO.	DESCRIPTION
PV2500	TIE DOWN STRAP 8'
PV2901	4' TRANSOM TIE DOWN STRAP (PAIR)



PV2282

SIDE RAIL SUPPORT PLATES

PART NO.	DESCRIPTION	SIZE
PV4200	FOR GALVANIZED ROLLER TRAILERS	4"



PV4200

BOAT STANDS

PART NO.	DESCRIPTION
PV2328	ALUMINUM WELDED BOAT STAND WITH 3"X10"X14' BUNKS
PV2329	ALUMINUM WELDED BOAT STAND W/3 STANDS

DECALS

PART NO.	DESCRIPTION
PV9732	MAGIC TILT SHARK DECAL
PV9885	MAGIC TILT FISHING TEAM (LOGO) DECAL
PV9918	DOT-C2 REFLECTIVE TAPE (PER FOOT)
PV9924	TRAILER STRIPING 3-1/4" (PER FOOT)
PV9998	4" X 10-1/2" NON SKID TAPE



PV9732

PROMOTIONAL MATERIALS

PART NO.	DESCRIPTION
PV9980	MAGIC TILT BANNER

PY - FASTENERS

GRADE 5 PLATED BOLTS

PART NO.	DIAMETER	LENGTH
PY0210	3/8"	1"
PY0215	3/8"	1-1/4"
PY0220	3/8"	2-1/2"
PY0225	3/8"	3"
PY0235	3/8"	4"
PY0240	3/8"	4-1/2"
PY0257	7/16"	1"
PY0250	1/2"	1-1/2"
PY0208	1/2"	1-3/4"
PY0252	1/2"	2-1/2"
PY0260	1/2"	3-1/2"
PY0265	1/2"	4"
PY0270	1/2"	4-1/2"
PY0273	1/2"	5"
PY0281	1/2"	6-1/2"
PY0274	1/2"	7-1/2"
PY0275	1/2"	5-1/2"
PY0276	1/2"	6"
PY0277	1/2"	10"
PY0280	5/8"	3-1/2"
PY0285	5/8"	4-1/2"



PY2010

PLATED CARRIAGE BOLTS

PART NO.	DIAMETER	LENGTH	FINISH
PY0303	1/4"	1-1/4"	PLATED
PY0308	5/16"	3/4"	PLATED
PY0309	5/16"	2-1/2"	PLATED



PY0308

GALVANIZED CARRIAGE BOLTS

PART NO.	DIAMETER	LENGTH	FINISH
PY1390	1/4"	1-1/4"	HDG
PY1050	RETAINER CLIP		HDG



PY1390

LAG BOLTS

PART NO.	DIAMETER	LENGTH	FINISH
PY0408	3/8"	4"	PLATED

MISCELLANEOUS PLATED SCREWS

PART NO.	DESCRIPTION	DIAMETER	LENGTH
PY0491	TEK SCREW (SELF TAPING)	#10-24	1"
PY0500	TEK SCREW (SELF TAPING)	#14	1-1/4"
PY0505	SCREW SET SQUARE HEAD	7/16"	1-1/2"
PY0710	BOLT TURN EYE	3/8"	OAL 5"



PY0491

PLATED SAE FLAT WASHERS

PART NO.	DIAMETER
PY0803	5/16"
PY0905	3/4"



PY0803

STAINLESS LOCK WASHERS

PART NO.	DIAMETER
PY1020	3/8"
PY1025	1/2"

PLATED NI-LOCK NUTS

PART NO.	THREAD
PY1305	3/8-16
PY1306	3/8-24*
PY1315	1/2-13
PY1320	5/8-11



PY1305

*FINE THREAD

PLATED SERRATED FLANGE NUTS

PART NO.	DIAMETER
PY1291	5/16-18



MISCELLANEOUS GALVANIZED BOLTS

PART NO.	DESCRIPTION	DIAMETER	LENGTH
PY1388	BOLT, TURN EYE	3/8"	3-1/2"
PY1496	BOLT, FANGED	5/16"	2-1/4"

PY1388

MISCELLANEOUS STAINLESS STEEL BOLTS

PART NO.	DESCRIPTION	DIAMETER	LENGTH
PY1938	MACHINED SCREWS	1/4"	1"
PY1940	MACHINED BOLTS	1/4"	2-3/4"



PY1496

GALVANIZED NUTS

PART NO.	DESCRIPTION	DIAMETER
PY1400	NUT, HEX	1/4"
PY1404	NUT, HEX	5/16"
PY1405	NUT, HEX	3/8-16
PY1406	NUT, HEX	7/16"
PY1410	NUT, HEX	1/2-13
PY1414	NUT, TOP LOCK	5/16"
PY1415	NUT, TOP LOCK	3/8"



PY1940

GALVANIZED FLAT WASHERS

PART NO.	DESCRIPTION	DIAMETER
PY1505	USS	3/8"
PY1515	USS	1/2"
PY1520	USS	7/8"
PY1525	SAE	7/8"

GALVANIZED LOCK WASHERS

PART NO.	DIAMETER
PY1590	1/4"
PY1605	3/8"
PY1606	7/16"
PY1610	1/2"



PY1404



PY1515

GALVANIZED HEX HEAD SCREWS

PART NO.	DIAMETER	LENGTH
PY1650	3/8"	1-1/4"
PY1615	3/8"	2-1/2"
PY1620	3/8"	4"
PY1624	3/8"	4-1/2"
PY1628	3/8"	5"
PY1632	3/8"	5-1/2"
PY1636	3/8"	7"
PY1655	1/2"	1-1/2"
PY1639	1/2"	2-1/2"
PY1640	1/2"	3-1/2"
PY1644	1/2"	4"
PY1648	1/2"	4-1/2"
PY1652	1/2"	5"
PY1654	1/2"	6"
PY1656	1/2"	5-1/2"
PY1657	1/2"	7"
PY1660	1/2"	7-1/2"
PY1659	1/2"	9"



PY1639



PY1655

STAINLESS HEX HEAD SCREWS

PART NO.	DIAMETER	LENGTH
PY1710	3/8"	1-1/4"
PY1715	3/8"	1-1/2"
PY1720	3/8"	3"
PY1725	3/8"	4"
PY1726	3/8"	4-1/2"
PY1733	1/2"	1-1/2"
PY1735	1/2"	3-1/2"
PY1736	1/2"	4"
PY1737	1/2"	4-1/2"
PY1738	1/2"	5"
PY1740	1/2"	5-1/2"



PY1720



PY1785

STAINLESS HEX NUTS

PART NO.	DIAMETER
PY1780	7/16"
PY1782	3/8"
PY1785	1/2"

STAINLESS NI-LOCK NUTS

PART NO.	DIAMETER
PY1804	1/4"
PY1810	3/8"
PY1815	7/16"
PY1820	1/2"
PY1825	5/8"



PY1815

STAINLESS FLAT WASHERS

PART NO.	DIAMETER
PY1900	1/4"
PY1902	3/8"
PY1904	7/16"
PY1905	1/2"
PY1920	5/8"



PY1905

STAINLESS CARRIAGE BOLTS

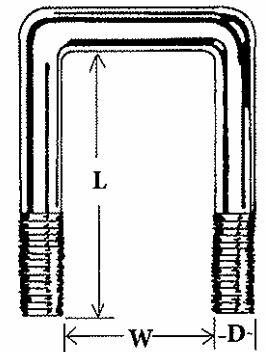
PART NO.	DIAMETER	LENGTH
PY1930	5/16"	1"



PY1930

GALVANIZED SQUARE U-BOLTS

PART NO.	DIAMETER	WIDTH	LENGTH
PY1990	3/8"	2-7/8"	7-1/2"
PY1995	3/8"	1-9/16"	2-5/8"
PY2011	1/2"	2-1/16"	3-5/16"
PY2015	1/2"	2-1/16"	4-13/16"
PY2045	1/2"	2-1/16"	5-5/16"
PY2020	1/2"	2-1/16"	5-13/16"
PY2025	1/2"	2-1/16"	6-5/16"
PY2050	1/2"	2-1/16"	6-13/16"
PY2060	1/2"	2-3/4"	4"
PY2035	1/2"	3-1/16"	4-5/16"
PY2065	1/2"	3-1/16"	4-13/16"
PY2037	1/2"	3-1/16"	5-5/16"
PY2040	1/2"	3-1/16"	5-13/16"
PY2070	1/2"	3-1/16"	6-5/16"
PY2075	1/2"	3-1/16"	6-13/16"
PY2079	1/2"	3-1/16"	8"
PY2078	1/2"	3-1/16"	8-1/2"
PY2081	1/2"	3-5/16"	5-5/16"
PY2087	1/2"	4-1/16"	7"
PY2089	1/2"	4-1/16"	8-13/16"
PY2090	7/16"	3-1/16"	2-13/16"
PY2091	7/16"	2-1/16"	3-13/16"
PY2095	7/16"	4-1/16"	2-13/16"
PY2096	7/16"	3-1/16"	4-5/16"



Use the diagram above for proper u-bolt measurement

STAINLESS U-BOLTS

PART NO.	DIAMETER	LENGTH	WIDTH
PY2500	3/8"	1-9/16"	2-5/8"
PY2528	1/2"	2-1/16"	4-5/16"
PY2530	1/2"	2-1/16"	4-13/16"
PY2532	1/2"	2-1/16"	5-5/16"
PY2534	1/2"	2-1/16"	5-13/16"
PY2536	1/2"	2-1/16"	6-5/16"
PY2541	1/2"	3-1/16"	3-5/16"
PY2540	1/2"	3-1/16"	4-5/16"
PY2543	1/2"	3-1/16"	4-13/16"
PY2542	1/2"	3-1/16"	5-5/16"
PY2544	1/2"	3-1/16"	5-13/16"
PY2546	1/2"	3-1/16"	6-5/16"
PY2550	1/2"	3-1/16"	7-5/16"



PY2534

PLATED "L" BOLTS

PART NO.	DIAMETER	LENGTH	WIDTH
PY4010	1/2"	4-1/2"	2-1/2"
PY4011	1/2"	4-1/2"	3-1/4"
PY4012	1/2"	5-1/2"	3-1/4"



PY4012

XB – CROSSMEMBERS

3" X 3" GALVANIZED CROSSMEMBERS

PART NO.	DESCRIPTION	GAUGE
XB4290	79-1/2" "STRAIGHT"	7 GA
XB4291	79-1/2" "V"	7 GA

3" X 3" ALUMINUM CROSSMEMBERS

PART NO.	DESCRIPTION	GAUGE
XB4440	79" "V"	1/4"
XB4442	79" "V"	3/16"
XB4444	79" "STRAIGHT"	3/16"
XB4445	79" "STRAIGHT"	1/4"

RM – MARINECRAFT

Attractively mounted on white packages, Marine Craft parts help pre-sell your trailer accessories. These high impulse parts will sell themselves. Marine Craft replacement parts will fit most of the better quality trailers manufactured in the U.S.A. and meet or exceed OEM specifications.

PART NO.	DESCRIPTION
RM0001	HUB BOX
RM0002	GUIDE KIT BOX 6" X 6" X 24"
RM0300	BEARING KIT 1-1/16"
RM0301	BEARING KIT 1-1/16" (UFP)
RM0350	BEARING KIT 1-3/8 X 1-1/16"
RM0351	BEARING KIT 1-3/8 X 1-1/16" (UFP)
RM0450	BEARING PROTECTOR (PAIR) 1.980 STAINLESS
RM0470	BEARING PROTECTOR COVER 1.980
RM0550	DUST CAP 1" (PAIR)
RM0600	AXLE MOUNT KIT, CHANNEL
RM0648	AXLE MOUNT KIT, TUBE (SHORT)
RM0650	AXLE MOUNT KIT, TUBE
RM0700	BRAKE KIT 21'
RM0700-1	BRAKE KIT 21' DOUBLE BANJO
RM0702	BRAKE LINE KIT UPGRDE 1AXLE TO 2AXLE
RM0702-1	BRAKE LINE KIT UPGRDE 1->2 DOUBLE BANJO
RM0800	HUB ASSEMBLY, 1-1/16" 5 LUG BOXED
RM0820	HUB ASSEMBLY, 1-3/8 X 1-1/16" BOXED
RM1030	TRAILER LIGHTING KIT UNDER 80"
RM1031	TRAILER LIGHTING KIT OVER 80"
RM0001	HUB BOX
RM0002	GUIDE KIT BOX 6" X 6" X 24"
RM0300	BEARING KIT 1-1/16"
RM0301	BEARING KIT 1-1/16" (UFP)
RM0350	BEARING KIT 1-3/8 X 1-1/16"
RM0351	BEARING KIT 1-3/8 X 1-1/16" (UFP)
RM0450	BEARING PROTECTOR (PAIR) 1.980 STAINLESS
RM0470	BEARING PROTECTOR COVER 1.980
RM0550	DUST CAP 1" (PAIR)
RM0600	AXLE MOUNT KIT, CHANNEL
RM0648	AXLE MOUNT KIT, TUBE (SHORT)
RM0650	AXLE MOUNT KIT, TUBE
RM0700	BRAKE KIT 21'
RM0700-1	BRAKE KIT 21' DOUBLE BANJO
RM0702	BRAKE LINE KIT UPGRDE 1AXLE TO 2AXLE
RM0702-1	BRAKE LINE KIT UPGRDE 1->2 DOUBLE BANJO
RM0800	HUB ASSEMBLY, 1-1/16" 5 LUG BOXED
RM0820	HUB ASSEMBLY, 1-3/8 X 1-1/16" BOXED
RM1030	TRAILER LIGHTING KIT UNDER 80"
RM1031	TRAILER LIGHTING KIT OVER 80"
RM1050	TAILLIGHT PETERSON L/H
RM1060	TAILLIGHT PETERSON R/H
RM1100	TAILLIGHT WESBAR LP - L/H
RM1110	TAILLIGHT WESBAR LP - R/H
RM1250	AMBER SIDE MARKER - M114A
RM1260	RED SIDE MARKER - M114R
RM1300	OVER 80 SIDE MARKER

RM - MARINECRAFT

PART NO.	DESCRIPTION
RM1350	AMBER SIDE MARKER #3280 WESBAR
RM1400	SIDE MARKER LENS-AMBER 55-15A
RM1450	SIDE MARKER LENS-RED 55-15R
RM1452	PETERSON TAILLIGHT LENS (1)
RM1500	WIRE HARNESS 25'
RM1550	TRUNK CONNECTOR 4'
RM1600	TRAILER END PLUG
RM1650	LICENSE TAG BRACKET
RM1752	TAIL LIGHT BRACKET BOLT-ON "L" WITH HOOK (EACH)
RM2150	WINCH STRAP 20'
RM2152	WINCH STRAP 25'
RM2160	TIE DOWN STRAP 8'
RM2170	TIE DOWN STRAP 12'
RM2175	TIE DOWN STRAP 16'
RM2290	WINCH 900#
RM2335	WINCH 1400#
RM2380	WINCH 1700#
RM2400	WINCH 1800#
RM2450	WINCH 2000# 2-SPEED
RM2500	WINCH 2500# 2-SPEED
RM2535	WINCH 3200#
RM2550	WINCH HANDLE 1/2 X 7"
RM2555	WINCH HANDLE 1/2"X6" - SHELBY
RM2565	WINCH HANDLE 5/8X8" (1700# SHELBY)
RM2570	WINCH HANDLE 5/8X10"(SHELBY 23,28,3
RM2600	WINCH HANDLE 1/2 X 10"
RM2650	WINCH HANDLE - OFFSET 5/8
RM2655	WINCH HANDLE - OFFSET 1/2" X 8"
RM2700	WINCH HANDLE 2-SPEED D-L
RM3200	5/8" SHAFT FOR 5" ROLLER
RM3250	5/8" SHAFT FOR 8" ROLLER
RM3300	5/8" SHAFT FOR 10" ROLLER
RM3310	5/8" SHAFT FOR 12" ROLLER
RM3360	5" TONGUE ROLL BRKT W/HDW (PAIR)
RM4050	PIVOT "L" BRACKET W/HARDWARE (PAIR)
RM4100	9" BUNK BRACKET WITH PIVOT "L"
RM4150	12" BUNK BRACKET WITH PIVOT "L"
RM4155	12" BUNK BRACKET PERMA LOCK ASSEMBLY 3"
RM4200	12" UPRIGHT BUNK BRACKET WITH HARDWARE (EACH)
RM4202	8" UPRIGHT BUNK BRACKET WITH HARDWARE (EACH)
RM4328	SIDE GUIDE KIT, NARROW
RM4512	ADJUSTABLE SQUARE TUBE GUIDE WITH 3' BUNK SET
RM4514	ADJUSTABLE SQUARE TUBE GUIDE WITH 6' BUNK SET
RM4530	ECONOMY GUIDE BOARD KIT WIDE
RM5028	COUPLER 2X2 3500#
RM5030	COUPLER 2 X 3 3500#
RM5050	HITCH BALL 1-7/8" STANDARD
RM5060	COUPLER 2 X 3 5000#

RM – MARINECRAFT

PART NO.	DESCRIPTION
RM5080	COUPLER REPAIR KIT 2" 3500# FULTON
RM5090	COUPLER REPAIR KIT 2" 3500# SHELBY
RM5095	COUPLER REPAIR KIT SHELBY 5000#
RM5100	HITCH BALL 2" STANDARD
RM5110	COUPLER REPAIR KIT FULTON 1-7/8"
RM5120	COUPLER REPAIR KIT SHELBY 1-7/8"
RM5130	COUPLER REPAIR KIT FULTON 2"
RM5140	COUPLER REPAIR KIT SHELBY 2"
RM5160	SPRING HANGER WELD-ON RAW (EACH)
RM5162	SPRING SLIP COLLAR WELD-ON RAW (EACH)
RM5200	STANDARD SAFETY CHAIN WITH HOOKS
RM5202	STANDARD SAFETY CABLES WITH HOOK
RM5250	3" CHANNEL U-BOLT KIT
RM5300	4" CHANNEL U-BOLT KIT
RM5350	GALVANIZED U-BOLT KIT 7/16X3-1/16X2-13/16
RM5400	GALVANIZED U-BOLT KIT 7/16X3-1/16X2-13/16
RM5450	GALVANIZED U-BOLT KIT 7/16X4-1/16X2-13/16
RM5550	GALVANIZED U-BOLT KIT 1/2X2-1/16X4-13/16
RM5600	GALVANIZED U-BOLT KIT 1/2X2-1/16X5-5/16
RM5650	GALVANIZED U-BOLT KIT 1/2X2-1/16X5-13/16
RM5700	GALVANIZED U-BOLT KIT 1/2X2-1/16X6-5/16
RM5800	GALVANIZED U-BOLT KIT 1/2X3-1/16X4-5/16
RM5850	GALVANIZED U-BOLT KIT 1/2X3-1/16X5-5/16
RM5900	GALVANIZED U-BOLT KIT 1/2X3-1/16X6-13/16
RM5950	COATED LAG SCREW KIT 3/8 X 1"
RM6000	PAL NUTS 5/8" (10)
RM6010	STAR WASHER 7/16" (10)
RM6020	AXLE NUT/WASHER/COTTER PIN 3/4"
RM6024	AXLE NUT/WASHER/COTTER PIN 1"
RM6034	LARGE WIRE CLIPS (12)
RM7000	SPARE TIRE CARRIER CUSTOM (BOXED)
RM7010	HUB & CARRIER FOR 1" 4L HUB
RM7020	HUB & CARRIER FOR 1" 5L HUB
RM7025	HUB & CARRIER FOR 1-1/16" 5L HUB
RM7030	HUB & CARRIER FOR 1-3/8X1-1/16" 5L
RM0003	H.D. MOUNTING KIT BOX 6"X6"X4"
RM0004	LIGHT KIT BOX 6"X6"12"
RM0006	COUPLER CARTON - SHELBY ALL MODELS
RM0008	900/1400# WINCH CARTON-SHELBY#1747-
RM0009	1700# WINCH CARTON - SHELBY#1748-00
RM0010	2300/2800/3200#WINCH CRTN-SHELBY#17
RM0012	600#-900# WINCH BOX 5-1/2X5-1/2X9
RM0014	1200#-1500# WINCH BOX 5-1/2X6X9
RM0016	1600#-1800# WINCH BOX 5-1/2X7-1/2X1
RM0018	2000#-2625# WINCH BOX 7-1/2X9X11
RM0022	HUB CARRIER BOX 12"X12"X6"
RM0024	BRAKE CLUSTER BOX

INDEX

<u>CATEGORY</u>	<u>PAGE(S)</u>
TERMS & CONDITIONS	2
PA – TIRES & WHEELS	3 & 4
PD – HUBS & ACCESSORIES	4 & 5
PE – BEARINGS, RACES & SEALS	5, 6 & 7
PF – BEARING PROTECTORS	7
PG – BRAKES	8, 9, 10, 11, 12, 13 & 14
PH – AXLE COMPONENTS	14 & 15
PI – FENDERS	15, 16, 17 & 18
PJ – SPRINGS	19
PK – UNDERCARRIAGE HARDWARE	19, 20, 21 & 22
PL – LIGHTING	22, 23 & 24
PM – WINCHES	24
PN – WINCH STRAPS	24 & 25
PO – WINCH POSTS	25, 26, 27 & 28
PP – KEEL ROLLS & BUNK SLIDES	29
PQ – POLY ROLLS & RUB PADS	30
PR – ROLL SHAFTS	31
PS – ROLL BRACKETS & ASSY.	31 & 32
PT – BUNKS & BRACKETS	33, 34, 35 & 36
PU – TONGUES AND COUPLERS	36 & 37
PV – GUIDES/BOW REST	38, 39, 40 & 41
PY – FASTENERS	41, 42, 43, 44, 45 & 46
XB – CROSSMEMBERS	46
RM – MARINE CRAFT	47, 48, 49 & 50



WWW.MAGICTILT.COM

2161 LIONS CLUB ROAD
CLEARWATER, FL 33764
TOLL FREE (800) 998-TILT (8458)
PHONE (727) 535-5561
FAX (727) 539-8472